

inspection mirrors

Application:

For inspecting partly concealed areas.

Execution:

- **Ident. No. 110:** 2 pcs, in plastic

- **Ident. No. 120:** In metal, 2 pcs with handle

- **Ident. No. 210–220:** Telescopic inspection mirror with handle, extendible, secured against twisting



Ø of mirror (mm)	24	30	30	50
Max. extension length (mm)	260	210	680	680
52995... Ident. No.	110	120	210	220

Prod. Gr. 580

ORION® Telescopic inspection mirror

Application:

For inspecting partly concealed areas.

Execution:

- **Ident. No. 270:**

- Chrome-plated metal handle
- With attachment clip

- **Ident. No. 270–280:** Round mirror

- **Ident. No. 280–290:** Plastic-coated metal handle

- **Ident. No. 290:** Rectangular mirror, mirror dimensions 43 x 65 mm



Ø of mirror (mm)	30	50	43
Max. extension length (mm)	520	730	720
52995... Ident. No.	270	280	290

Prod. Gr. 598

Telescopic pick-up magnet

Application:

For lifting and picking up small magnetic objects.

Execution:

- Retention force 3 kg
- Neodymium bar grip 13 x 20 mm
- Extension length: 260-700 mm



Head Ø (mm)	13
52995... Ident. No.	320

Prod. Gr. 580

ORION® Inspection set Modular system

Application:

For all inspection tasks.

Execution:

- In case with impact-resistant foam inlay

Delivery:

2 mirrors (round 60 mm, rectangular 65 x 43 mm), telescopic handle, LED inspection lamp, magnetic attachment, batteries



Ø of mirror (mm)	60
Width of mirror (mm)	43
Mirror height (mm)	65
Max. extension length (mm)	600
52995... Ident. No.	500

Prod. Gr. 598

Claw gripper with 3 claws

Application:

For gripping hard-to-reach parts.

Technical data:

- Surface: Chrome-plated



Ident. No. 110



Ident. No. 120



Ident. No. 130

Length (mm)	170	500	540
Version	Inflexible	Flexible shaft	Flexible shaft
52998...	Ident. No. 110	Ident. No. 120	Ident. No. 130

Prod. Gr. 580

Magnetic angle setting device

MAG-FIX

Application:

For joining flat, curved and round iron components with angular accuracy; simple to remove by tilting on side.

- Dimensions 120 x 82 x 14 mm, 24 mm hole

Advantage:

- No maintenance required at all; all that is needed is to keep the contact surfaces clean

Execution:

- Permanent magnet with excellent retention force

Width of side (mm)	14
Limb length (mm)	120/82
Angle (Degree)	90
51129...	Ident. No. 015

Prod. Gr. 592



Permanent magnetic Vee block

Individually and in a set

Application:

For securing and straightening irregularly shaped magnetic components.

Execution:

- Three magnetic contact surfaces that can be activated/deactivated together

Delivery:

In robust wooden storage box

Length x width x height			100 x 70 x 95 mm
Min./max. workpiece Ø			6-70 mm
51130...	Individual	Ident. No.	510
51130...	Pair	Ident. No.	610

Prod. Gr. 592



ORION® Flat magnetic grips

Without threaded pin

Application:

Auxiliary materials with universal application during clamping, assembling, lifting and welding operations, and for installing in devices etc.

- Magnetic shielding
- Without threaded pin
- Operating temperature up to 100°C

Execution:

- With hard ferrite core
- Surface galvanised

Technical data:

- Outer diameter: 80 mm
- Height: 18 mm
- Adherence strength: 550 N

51143...	Ident. No.	590
----------	------------	-----

Prod. Gr. 591



ORION® Flat magnetic grips

With threaded bush

Application:

Auxiliary materials with universal application during clamping, assembling, lifting and welding operations, and for installing in devices etc.

Execution:

- With hard ferrite core
- Surface galvanised
- Magnetic shielding
- With threaded bush
- Operating temperature up to 100°C



General requirements \ Holding magnets and small magnets

Outer Ø (mm)	10	13	16	20	25	32	40	50	63	80	100
Height (mm)	11.5	11.5	11.5	13	15	15	18	22	30	34	42
Height of the base (mm)	4.5	4.5	4.5	6	7	7	8	10	14	18	22
Adherence strength (N)	5	12	30	40	49	90	130	220	300	550	900
Thread dimension	M3	M3	M3	M3	M4	M4	M5	M6	M8	M10	M12
Thread length (mm)	7	7	7	7	8	8	10	12	16	16	20
51145... Ident. No.	500	510	520	530	540	550	560	570	580	590	600

Prod. Gr. 591

ORION® Flat magnetic grips With bore hole and countersink

Application:

Auxiliary materials with universal application during clamping, assembling, lifting and welding operations, and for installing in devices etc.

- Surface galvanised
- Magnetic shielding
- With bore hole and countersink
- Operating temperature up to 100°C



Execution:

- With hard ferrite core

Advantage:

- Fastening option from inside with a screw

Outer Ø (mm)	16	20	25	32	40	50	63	80
Height (mm)	4.5	6	7	7	8	10.5	14	18
Bore Ø (mm)	3.5	4.2	5.5	5.5	5.5	6.5	6.5	6.5
Adherence strength (N)	30	40	49	90	130	180	290	540
51146... Ident. No.	720	730	740	750	760	770	780	790

Prod. Gr. 591

ORION® Magnetic bar grips Round, with an AlNiCo core

Application:

Auxiliary materials with universal application during clamping, assembling, lifting and welding operations, and for installing in devices etc.

Execution:

- With AlNiCo core
- Magnet encased in steel
- Operating temperature up to 450°C
- Fastening option: Press in, shrink or glue in place
- Smooth exterior surface with h6 fit tolerance



Outer Ø (mm)	6	8	10	13	16	20	25	32	40	50
Height (mm)	10	12	16	18	20	25	30	35	45	50
Adherence strength (N)	6	10	14	27	36	72	90	100	130	200
51148... Ident. No.	500	510	520	530	540	550	560	570	580	590

Prod. Gr. 591

ORION® Magnetic bar grips Round, with an AlNiCo core

Application:

Auxiliary materials with universal application during clamping, assembling, lifting and welding operations, and for installing in devices etc.

Execution:

- With AlNiCo core
- Magnet encased in steel
- Operating temperature up to 450°C
- With female thread
- Fastening option: Screws



Outer Ø (mm)	6	7	10	13	16	20	25	32
Height (mm)	20	20	20	20	20	25	35	40
Adherence strength (N)	1.7	4	8.5	12	20	50	115	200
Thread dimension	M3	M3	M4	M4	M4	M6	M6	M8
Thread length (mm)	5	5	7	7	5	7	9	9
51150... Ident. No.	800	810	820	830	840	850	860	870

Prod. Gr. 591

ORION® Magnetic grips

Application:

Auxiliary materials with universal application during clamping, assembling, lifting and welding operations, and for installing in devices etc.

Execution:

- Magnet encased in brass
- Fastening option: Press in, shrink or glue in place

Advantage:

- Smooth, with h6 fit tolerance
- **Ident. No. 500–560:** With neodymium core for approx. 5x adhesive force compared to conventional flat grips
- **Ident. No. 700–760:** With samarium cobalt core for approx. 5x adhesive force compared to conventional flat grips



Outer Ø (mm)			6	8	10	13	16	20	25
Height (mm)			20	20	20	20	20	25	35
Adherence strength (N)			7	12	45	70	150	300	500
51149... Operating temperature up to 100°C	Ident. No.		500	510	520	530	540	550	560
			●	●	●	●	●	●	●
51149... Operating temperature up to 200°C	Ident. No.		700	710	720	730	740	750	760
			●	●	●	●	●	●	●

Prod. Gr. 591

ATORN® Magnetic holder

Application:

For suspending blow guns, cables, clothes, etc.

Execution:

- High retention force thanks to 6 neodymium magnets in the pot magnet
- The rubber coated magnet avoids scratches and is oil-resistant

- Solid plastic version
- The special shape allows 2 separately usable zones and prevents the suspended parts falling

Technical data:

- Outer diameter: 65 mm



	Colour		
51150...	Blue	Ident. No.	100
			●

Prod. Gr. 504

ORION® Telescopic pick-up magnet

Chromium plated, with attachment clip

Application:

For lifting and picking up small magnetic objects.

Execution:

- Chrome-plated
- With attachment clip
- Extension length: 145–650 mm



Head Ø (mm)		7
51151...	Ident. No.	020
		●

Prod. Gr. 518

ORION® Magnetic lifter

Application:

For lifting and picking up small magnetic objects.

Execution:

- With flexible shaft

- Chrome-plated
- Plastic handle
- **Ident. No. 500–530:** With fixed neodymium core magnetic head
- **Ident. No. 600–620:** With detachable AlNiCo magnetic head



Ident. No. 500–530



Ident. No. 600



Ident. No. 610



Ident. No. 620

Length (mm)		380	380	420	420	600	600	600
Head Ø (mm)		8	12	14	19	11	20	30
51155...	Ident. No.	500	510	520	530	600	610	620
		●	●	●	●	●	●	●

Prod. Gr. 591

ORION® Hand-held bar magnets 700 mm long

Application:

For effortlessly removing screws, tools and other small parts from gearbox enclosures or other difficult-to-reach areas.

- With oil-resistant protective sleeve
- Plastic handle

Technical data:

- Length: 700 mm

Execution:

- With flexible handle

Head Ø (mm)		11	20	30
51156...	Ident. No.	010	020	040
		●	●	●

Prod. Gr. 591



Magnetic swarf and small parts lifter

Spänemaxx 175, 300 and 600

Application:

use the magnet to attract chips or small pieces, then pull the knob to release the pieces.

- rustproof rod, plastic handle with protective shield
- magnetic tensile force of 20 kg
- handle diameter of 33 mm
- handle length incl. scraper of 215 mm

Execution:

- easy removal of impurities from machines and coolant

Length (mm)	390
Head Ø (mm)	25
51158...	Ident. No. 040
	●

Prod. Gr. 518



ORION® Organising magnets

Application:

For fixing drawings and other paper documents to magnetic surfaces.

Execution:

- Magnetic clamp with coloured plastic cap



Outer Ø (mm)	Blue		Yellow		Red		Black		White	
	51161... Ident. No.	●	51161... Ident. No.	●	51161... Ident. No.	●	51161... Ident. No.	●	51161... Ident. No.	●
20	010	●	020	●	030	●	040	●	050	●
25	060	●	070	●	080	●	090	●	100	●
30	110	●	120	●	130	●	140	●	150	●
34	155	●	160	●	170	●	180	●	190	●

Prod. Gr. 591

SAMDAHALLBAUER Oil dispensers With plastic container

Application:

For oiling movable parts.

- Small polyethylene oil dispenser
- Elastic
- With sealing cap
- **No. 56020:**
 - Oil dispensers for the tool case
 - Polyethylene container
 - With brass pipe and turn-lock

Execution:

- Transparent
- Indestructible
- **No. 56010:**



No. 56010



No. 56020

Volumetric capacity		100 ml	100 ml
Length (mm)		130	155
Pipe length (mm)		70	60
56010...	Ident. No.	075	-
56020...	Ident. No.	-	015

Prod. Gr. 575

PRESSOL oil dispensers and oil spray cans

Application:

For oiling movable parts.

Execution:

▪ **No. 56026:**

- Transparent polyethylene container
- Adjustable brass pointed pipe
- Squeeze oiler without pump, with turn-lock fastener

▪ **No. 56032:**

- Container produced from slightly transparent polyethylene
- Single-action brass pump for metered drop discharge

▪ **No. 56032-56034:**

- Aluminium spray pipe
- Virtually complete container drainage

▪ **No. 56034:**

- Made from die-cast zinc
- With double-action brass pump for higher pump capacity
- Controlled drop delivery



No. 56026



No. 56032



No. 56034

Volumetric capacity		0.25 l	0.5 l	0.2 l	0.3 l	0.5 l
Pipe length (mm)		-	-	135	165	165
56026...	Ident. No.	025	050	-	-	-
56032...	Ident. No.	-	-	020	030	050
56034...	Ident. No.	-	-	020	030	050

Prod. Gr. 5IE

along oil dispensers and oil spray cans

Application:

For oiling movable parts.

Execution:

▪ **Ident. No. 020, 030-050:**

- Made of breakproof aluminium
- Double pump unit and pointed pipe made from brass
- Pivot-mounted suction cylinder ensures container is completely drained

- Use upside down also possible

▪ **Ident. No. 025-026:**

- Transparent polyethylene container
- Retractable, lockable brass pipe
- Turn-lock fastener

▪ **Ident. No. 120-150:**

- Polyethylene container
- Single pump unit and pointed pipe made from brass



Ident. No. 020, 030-050



Ident. No. 025-026



Ident. No. 120-150

Volumetric capacity		0.2 l	0.3 l	0.5 l	0.25 l	0.5 l
Pipe length (mm)		132	132	132	140	140
56036...	Aluminium container	Ident. No.	020	030	050	-
56036...	Squeezing oiler	Ident. No.	-	-	-	025
56036...	PE oiler	Ident. No.	120	130	150	-

Prod. Gr. 575

ORION® pistol-type atomiser

Application:

For finely atomising liquids.

Execution:

- Plastic container, white, slightly transparent
- Adjustable nozzle – spray mist or jet
- **No. 56056:** With Viton seal



No. 56056



No. 56056

	Volumetric capacity	Colour	Ident. No.	
56056...	0.6 l	Transparent	Ident. No.	500
56058...	0.5 l	Transparent	Ident. No.	500
56058...	1 l	Transparent	Ident. No.	510

Prod. Gr. 598

Manual sprayer

Application:

Ident. No. 010: For atomising aggressive substances such as solvents, acids, alkalis and various cleaning agents.

Ident. No. 020: For atomising mineral oil-based lubricants, separating agents, formwork oils etc.

Ident. No. 030: For atomising watery substances

Execution:

- With adjustable spray head and fill level scale

Advantage:

- **Ident. No. 010-020:** Spraying in all areas, including above head height, thanks to special 360° suction/spray system



Ident. No. 010



Ident. No. 020



Ident. No. 030

		Volumetric capacity	Colour	Ident. No.	
56059...	Super Resistant 360°	0.5 l	White Transparent	Ident. No.	010
56059...	Solution Classic	0.5 l	White Transparent	Ident. No.	020
56059...	Basic model	0.5 l	White Transparent	Ident. No.	030

Prod. Gr. 575

Pressurised spray bottle

Application:

For atomising liquids.

Execution:

- Transparent container with scale and large filler opening
- Suitable for chemicals, solvents, cleaning agents and formwork oils

- Powerful manual air pump for pumping
- Nickel-plated valve rod and control nozzle
- Chemically resistant viton (FKM) seals
- Overpressure valve and safety lock

Advantage:

- No propellants used so pressure is created using environmentally friendly means



Volumetric capacity	1.25 l
56060...	Ident. No. 100

Prod. Gr. 575

ORION® Pressurised spray bottle

Application:

For atomising liquids.

Execution:

- Plastic container, white, slightly transparent

- Adjustable nozzle – spray mist or jet
- Not suitable for oil and solvents

Advantage:

- With locking lever for continuous spray

Volumetric capacity	2 l
Working pressure (bar)	3
56061...	Ident. No. 520

Prod. Gr. 598





Suction and filling press

Application:

Suctioning and transmitting liquids from gears, machines, etc.

Execution:

- Container made of zinc-plated steel
- Suction hose made of transparent plastic
- Completely leak-proof double-lipped oil cuff

- Non-slip handle on the drawbar
- Suitable for oils and gearbox oils to SAE 90, hydraulic, crude and cutting oils, diesel, rust remover, coolant and anti-freeze

Technical data:

- Hose length: 300 mm



Ident. No. 500



Ident. No. 510

Volumetric capacity		500 ml	1000 ml
Pipe length (mm)		360	530
56070...	Ident. No.	500	510

Prod. Gr. 575



Double-action suction and filling press

Application:

For alternating suction and transmission of liquids from gears, machines, etc.

Execution:

- Containers made of zinc-plated steel, double suction and dispensing valve in the head
- Branch hoses made of transparent plastic
- Completely leak-proof double-lipped oil cuff

- Non-slip handle on the drawbar
- Suitable for oils and gearbox oils to SAE 90, hydraulic, bore and cutting oils, diesel, rust remover, coolant and anti-freeze

Technical data:

- Volumetric capacity: 500 ml
- Pipe length: 360 mm
- Hose length: 500 mm



56070...	Ident. No.	550
----------	------------	-----

Prod. Gr. 575



Measuring cups

Execution:

Ident. No. 010:

- Resistant to oil and acid
- 10-ml scale graduation

Ident. No. 010-015:

- Made of polypropylene
- Transparent

Ident. No. 015:

- With handle
- With scale
- Supplied measuring cup heights: 130, 150, 210 mm
- **Ident. No. 030-050:**
 - PE container, with scale and grip
 - Flexible outlet
- **Ident. No. 110:**
 - Made from tinfoil
 - With polyethylene safety outlet



Ident. No. 010



Ident. No. 015



Ident. No. 030-050



Ident. No. 110

Volumetric capacity		1 l	0.5 l 1 l 2 l	3 l	5 l	1 l
Height (mm)		170	-	265	300	270
56076...	Ident. No.	010	015	030	050	110

Prod. Gr. 51E



Measuring jugs made of zinc-plated sheet steel

Execution:

- High stability, robust thick-walled fully zinc-plated sheet steel
- Funnel-shaped rigid outlet for safe pouring without spilling

- Dimensionally stable and heat-resistant
- Internal brass measuring scale
- Suitable for self and non-self-lubricating media - heating oil, diesel, lubricating oil, coolant and anti-freeze

Volumetric capacity		5 l	10 l
56076...	Ident. No.	305	310

Prod. Gr. 575



PRESSOL Funnel

Execution:

- High lip for spray protection
- Resistant to oil, petrol and acid
- **Ident. No. 010:**

- With replaceable brass fine screen
- Flexible, removable metal outlet
- Capacity: 3200 ml
- **Ident. No. 025:** Flexible outlet



Ident. No. 010



Ident. No. 025

Ø (mm)		200	160
Material		Sheet steel	PE - Polyethylene
56077...	Ident. No.	010	025

Prod. Gr. 5IE

PRESSOL Set of funnels

Execution:

- Funnel diameters: 50, 75, 100, 120, 150 mm

- Resistant to oil, petrol and acid

Material		PE - Polyethylene
Number of pieces in assortment/set (PCS)		5
56077...	Ident. No.	110

Prod. Gr. 5IE



Lubricant containers

Application:

For individual lubricant requirements.

- With permanent magnet in the base

Execution:

- **No. 56080:**
- Made from indestructible plastic

- **No. 56090:**
- Made from cellidor
- Impact-resistant
- Transparent
- With retaining handle



No. 56080



No. 56090

	Volumetric capacity	Length x width	
56080...	0.25 l	80 x 80 mm	Ident. No. 010
56090...	0.5 l	125 x 120 mm	Ident. No. 010

Prod. Gr. 575

Lubricating brush

Execution:

- Resistant to oil and coolant
- With sheet metal handle

Technical data:

- Version: Flat



Brush thickness (mm)	9	12	15	18
56092... Ident. No.	010	020	030	040

Prod. Gr. 575

PRESSOL Multi-purpose tub
Made from shatterproof polyethylene

Application:
For changing oil or for cleaning parts.

- With robust handles

Execution:
▪ Made of break-proof polyethylene
▪ Black

- Advantage:**
- With raised section to position dirty parts
 - Lip all the way around tub for safe pouring



Volumetric capacity		6 l
Ø (mm)		390
Height (mm)		120
56095... Ident. No.		010

Prod. Gr. 51E

ORION Push-type grease presses
With follow-up piston

Application:
For greases of medium consistency and high-viscosity oils.

- No. 56191: With pointed nosepiece for flush-type lubrication nipples DIN 3405
- No. 56192: With universal adapter for spherical and conical lubricating nipple DIN 71412

Execution:
▪ Made from steel, burnished

- Technical data:**
- Feed volume per stroke: 0.6 cm³



Volumetric capacity		60 ml	0.15 l
Length (mm)		115	185
	Mouthpiece outlet		
56191... Extrusion die	Ident. No.	500	510
56192... Universal die	Ident. No.	500	510

Prod. Gr. 598

ORION Oil presses
For all oils

Application:
For all oils.

- Execution:**
- Ident. No. 500: With pointed nosepiece for flush-type lubrication nipples DIN 3405
 - Ident. No. 510: With universal adapter for spherical and conical lubricating nipple DIN 71412

Volumetric capacity		180 ml
Feed volume per stroke (cm ³)		0.8
Length (mm)		133
	Mouthpiece outlet	
56195... Extrusion die	Ident. No.	500
56195... Hollow hydraulic die	Ident. No.	510

Prod. Gr. 598

High pressure hand-operated lever-type grease gun

Application:
For lubricating with grease, filling with grease gun filler no. 56259 or with grease cartridge no. 56235 100.

- Painted black
- Ident. No. 010:
 - Robust all-steel design, painted silver
 - Short stroke system, infinitely variable piston rod fixing
 - Filling/draining valve, ergonomic handle
- For 400 g cartridges or 500 g loose grease

Execution:
▪ Ident. No. 005:
▪ Made of steel




Ident. No. 005



Ident. No. 010

Volumetric capacity		400 ml	400 ml
Max. working pressure (bar)		400	400
Connection thread		M10 x 1	M10 x 1
Feed volume per stroke (cm ³)		1.2	2.0
PRESSOL 56235... Ident. No.		005	-

General requirements \ Grease presses

Volumetric capacity		400 ml	400 ml
Max. working pressure (bar)		400	400
Connection thread		M10 x 1	M10 x 1
Feed volume per stroke (cm ³)		1.2	2.0
 56235...	Ident. No.	-	010

PRESSOL = Prod. Gr. 5IE
MATO = Prod. Gr. 5JM

Accessories for		56235 005	56235 010
56235... g	Grease cartridge, 400	Ident. No. 100	Ident. No. 100

High-pressure hand lever grease press

As a set

Application:

For lubricating

with articulated nosepiece, quick-change hose, pointed nosepiece, hollow nosepiece

Execution:

- Industry design with grease press 56235 010
- In plastic case with oil-resistant inlay
- Contents: Lever-type grease gun, nozzle tube with hydraulic nosepiece, quick-change nozzle tube with articulated nosepiece, quick-change hose, pointed nosepiece, hollow nosepiece

Delivery:

Lever-type grease gun, nozzle tube with hydraulic nosepiece, quick-change nozzle tube with sliding coupling, quick-change nozzle tube with articulated nosepiece, quick-change hose, pointed nosepiece, hollow nosepiece



Volumetric capacity		400 ml
Max. working pressure (bar)		400
Connection thread		M10 x 1
56235...	Ident. No.	400

Prod. Gr. 5JM

Accessories for		56235 400
56235... g	Grease cartridge, 400	Ident. No. 100

High-pressure hand lever grease gun COLOUR

Application:

Ideal for grease up to NLGI 2

- Precision pumping station without additional seals, extremely reliable
- DIN 1283, TÜV/GS test and TÜV marking on black steel tube
- Fillable using 400 g grease cartridges or loose grease
- Filling and bleeding nipple

Execution:

- With 5 different coloured handles - for better assignment of special greases to different corresponding lubrication points
- Full lift technology suction strength (high pressure build-up)



Volumetric capacity	400 ml
Max. working pressure (bar)	400
Connection thread	M10 x 1
56237...	Ident. No. 010

Prod. Gr. 575

Nozzle pipes and high-pressure hose lines

For high-pressure hand lever grease presses

Execution:

- Ident. No. 200:**
 - Curved nozzle pipe, with hollow nosepiece
 - With hollow nosepiece
- Ident. No. 210:** Curved nozzle pipe, with pointed nosepiece
- Ident. No. 220:** Curved nozzle pipe, with hydraulic gripper nosepiece
- Ident. No. 230-240:** High-pressure hose line with hydraulic gripper nosepiece
- Ident. No. 250-260:** high-pressure hose line with thrust coupling; M 1 for flat grease nipple, 16 mm

- Ident. No. 270-280:** high-pressure hose line with thrust coupling; M 22 for flat grease nipple, 22 mm
- Ident. No. 290-300:** high-pressure hose line with thrust coupling; M 4 for flat grease nipple, 10 mm

Advantage:

- Ident. No. 230-300:** Fail-safe, high-pressure reinforced rubber hose 13 mm diameter, excellent occupational safety due to 1650-bar bursting pressure

Technical data:

- Connection thread: M10 x 1



Mouthpiece outlet	Hollow die	Extrusion die	Hydraulic gripping die	Hydraulic gripping die	Hydraulic gripping die	Slide coupling M1	Slide coupling M1	Slide coupling M22	Slide coupling M22	Slide coupling M4	Slide coupling M4
Length (mm)	150	150	150	300	500	-	-	-	-	-	-
Hose length (mm)	-	-	-	-	-	300	500	300	500	300	500
56235... Ident. No.	200	210	220	230	240	250	260	270	280	290	300

Prod. Gr. 5JM

Grease press accessory set in a metal case

Application: difficult-to-reach lubrication areas.
For all common lubricating nipples, for accessing

Connection thread	M10 x 1
Composition of set	2 hydraulic nosepieces for H, 1 hollow nosepiece for K, 1 pointed nosepiece for D, 1 16-mm slide coupling for M1, 1 300-mm reinforced hose, 3 150-mm curved nozzle pipes, 1 150-mm straight nozzle pipe, 1 90° bracket for hydraulic nosepiece, extension, quick-action coupling suitable for all hydraulic nosepieces, 3 H 1 lubricating nipples: M6 x 1, M8 x 1, M10 x 1, G 1/8, H 2: M6 x 1, M8 x 1, 1 thread adapter from G 1/8 to M10 x 1 female thread, in metal case
56240...	Ident. No. 005

Prod. Gr. 51E



Crank pump with suction pipe

Application: For pumping diesel, heating oil, hydraulic and engine oils

- Adjustable G2-inch tap adapter
- 1 m transparent NW 25 plastic hose with elbow outlet

Execution:

- Suitable for 60 and 200-l metal barrels
- 3-part metal suction tube with foot valve

Advantage:

- Robust. Powerful, self-priming and perfectly sealed

Feed volume per stroke (l)	0.4
Suitable for container	60-200 litres
56305...	Ident. No. 010

Prod. Gr. 575



Hand lever plastic drum pump

Application:

- Ident. No. 010:** For pumping heating oil, emulsions, water, diesel, petroleum, hydraulic oil
- Ident. No. 020:** For pumping chemicals, cleaning agents, weak alkalis and acids

Execution:

- Adjustable suction pipe
- **Ident. No. 010:** Polypropylene (PP) body and seal
- **Ident. No. 020:** PP/PE body, viton seals

Advantage:

- Extremely light and flexible



Ident. No. 010



Ident. No. 020

Model	Drum pump PP	Drum pump PP/PE
Min./max. immersion depth	400-900 mm	400-900 mm
Feed quantity (l/min)	16	16
Suitable for container	60-200 litres	60-200 litres
56317...	Ident. No. 010	020

Prod. Gr. 575

Lever-operated cylinder-type drum pump

Application: For pumping petroleum, diesel, heating oil, engine oil, machine oil, cutting oil, Multititn, anti-freeze. NOT suitable for petrol

- Barrel screw connection G 2" a and M 64x4 a
- 1-m outlet hose with hose clamps, steel outlet manifold and anti-kink spring

Execution:

- With galvanised telescopic tube G1/2-inch

Advantage:

- Suction pipe can be adjusted to set the immersion depth

Min./max. immersion depth	480-930 mm
Feed quantity (l/min)	35
Suitable for container	60-210 litres
56318...	Ident. No. 500

Prod. Gr. 575



T HORN
TECALEMIT **drum pump**
manually operated

Application:

For pumping low-viscose mineral oils, as well as petrol.

Execution:

- For upright drums

Model	K 10 C
Min./max. immersion depth	0-840 mm
Feed volume per stroke (l)	0.25
Suitable for container	200 litres
56320...	Ident. No. 010

Prod. Gr. 575

Accessories for		56320 010
56321...	Hose sets	Ident. No. 010



T HORN
TECALEMIT **Drum pump**
Voltage 230 V, 50/60 Hz, shockproof, suppressed

Application:

For pumping heating and diesel oils of hazard class A III from all standard containers. Fast and simple filling of heating oil into transport containers and refuelling of all kinds of diesel vehicles.

Execution:

Execution:

- 230-V voltage, 50/60 Hz, shockproof, noise-suppressed
- Suction hose with filter
- Pump housing and nozzle valve made from high-quality, impact-resistant plastic
- **Ident. No. 120:**

- Motor pump
- Pressure hose with anti-kink spring
- With nozzle valve, dispensing pump for supply of small volumes
- **Ident. No. 140:**
 - Self-priming hybrid pump
 - Delivery hose with automatic nozzle valve and hose swivel joint
 - 4-m connection cable with plug

Advantage:

- **Ident. No. 120:** Emergency manual mode in the event of power failures



Ident. No. 120



Ident. No. 140

Model	HORNET W 40	HORNET W 85
Max. immersion depth (mm)	1600	1600
Feed quantity (l/min)	40	85
Suitable for container	60-200 litres	60-200 litres
56345...	Ident. No. 120	140

Prod. Gr. 575

ORION® easy-opener and multi-opener

Application:

the ideal tool for gently opening sensitive components

Execution:

- **Ident. No. 100:**
 - delicate, slim design – flexible and strong at the same time
 - three lever surfaces with different material thicknesses



Ident. No. 100



Ident. No. 110



Length (mm)				178	180
	Width (mm)	Material of the grip handle	Ident. No.	100	-
56549...	32	Polyamide		•	
56549...	32	Plastic glass fibre reinforced		-	•

Prod. Gr. 598

Spatula

With wooden handle

Application:

For applying, spreading and smoothing materials such as putty, and for removing planar materials.

Execution:

- With wooden handle



	Width (mm)	Material	Material of the grip handle	Ident. No.	
56550...	30	Steel	Wood	Ident. No.	030 ●
56550...	40	Steel	Wood	Ident. No.	040 ●
56550...	50	Steel	Wood	Ident. No.	050 ●
56550...	60	Steel	Wood	Ident. No.	060 ●
56550...	70	Steel	Wood	Ident. No.	070 ●
56550...	80	Steel	Wood	Ident. No.	080 ●
56550...	100	Steel	Wood	Ident. No.	100 ●

Prod. Gr. 566

joint puller in set

Application:

For pulling and smoothing permanently elastic joint compounds

Execution:

- 17 different options
- 4 differently shaped pullers with radius details



56551... | Ident. No. 400
●

Prod. Gr. 580

Brushes

Execution:

- **No. 56570:**
 - Non-sparking, plastic ferrule
 - Very full design, wooden handle
- **No. 56570 025–56570 040, 56576 125–56576 160:** Ensures pure, light china bristles
- **No. 56573:**
 - In tinplate ferrule
 - Pure, light china bristles
 - Ground wooden handle
- **No. 56576:**
 - Curved, with long wooden handle
 - Tinplate ferrule.
- **No. 56576 025–56576 060:** Ensures pure, grey china bristles



No. 56570



No. 56573



No. 56576 025–56576 060



No. 56576 125–56576 160

Brush thickness (mm)			20	25	30	35	40	50	60
56573...	Flat brush	Ident. No.	020 ●	025 ●	-	035 ●	-	050 ●	060 ●
56570...	Industrial round brush	Ident. No.	-	025 ●	030 ●	-	040 ●	-	-
56576...	Radiator paint brush, dark bristles	Ident. No.	-	025 ●	-	035 ●	-	050 ●	060 ●
56576...	radiator paint brush with light-coloured bristles	Ident. No.	-	125 ●	-	135 ●	-	-	160 ●

Prod. Gr. 566

Source: Hahn+Kolb Werkzeuge GmbH
 Technical data subject to change.
 Availability subject to country specific rules and regulations.

www.iconridge.com

Brush set

Execution:

- 1 flat brush each of size 20, 25, 35, 50 mm
- 1 round brush each of size 2, 4, 6
- 1 enamel brush each of size 10, 12, 16

Number of pieces in assortment/set (PCS)		10
56580...	Ident. No.	005

Prod. Gr. 566



3M 101E crepe adhesive tape

The basic professional product for secure indoor masking and fixing

Application:

Ideal for painting jobs with minimal requirements and low thermal loads, for basic masking and protection indoors, for bundling, packing and marking, and for securing light loads.

- Soft to the touch and can be torn by hand

Technical data:

- Thickness: 0.125 mm
- Colour: Beige
- Type of adhesive: Rubber/resin
- Adhesive tape backing material: Impregnated fine crepe paper
- Max. short-term temperature resistance: 60 °C
- Breaking elongation: 9 %

Execution:

- Good adhesion on many surfaces
- Controlled dispensing
- Good curve-negotiating properties

Width of tape x length of strap		18 mm x 50 m	30 mm x 50 m	48 mm x 50 m
56582...	Ident. No.	300	310	320

Prod. Gr. 6RM



GEDORE Tyre levers

WERKZEUGE FÜRS LEBEN

Profiled shape

Execution:

- With protective surfaces for aluminium rims

Technical data:

- Surface: Chrome-plated
- Material: Chrome-vanadium steel

Length (mm)		200	305	400	500	610
52199...	Ident. No.	020	030	040	050	060

Prod. Gr. 530



GEDORE Crate openers (pry bars)

WERKZEUGE FÜRS LEBEN

Application:

For removing nails, for prizing open crates and much more.

Execution:

- Made from chrome-molybdenum-vanadium steel
- With hollow claw and tongue
- Varnished
- Octagonal

Length (mm)		350	600	800
Ø (mm)		18	18	18
56611...	Ident. No.	010	020	030

Prod. Gr. 558



GEDORE Universal lever bars

WERKZEUGE FÜRS LEBEN

Execution:

- Made of steel
- Other side tapered to a point
- One side with polished surface and bent 45°
- Octagonal

Length (mm)		Ø (mm)	56615...
400		16	Ident. No. 010

Prod. Gr. 558



STANLEY Manual stapler

Application:

For stapling on edges, corners and grooves.

Execution:

- For type A staples, 6-14 mm arm length
- Staple slot at the front

Suitable for clamp type	A
56630...	Ident. No. 300
	●

Prod. Gr. 576

Advantage:

- For precise working; impact force can be controlled using the setting lever
- Repeat impact function for staples not driven in all the way



STANLEY Hand-held stapler

Application:

Professional quality – for regular stapling tasks.

Execution:

- For type G staples, 6-14 mm arm length

Suitable for clamp type	G
56630...	Ident. No. 400
	●

Prod. Gr. 576

- Robust aluminium housing
- Height/depth adjustment
- Smooth pressure lever with pinch guard
- Easy-to-use staple compartment



STANLEY Electric stapler

Application:

For continuous stapling tasks.

Execution:

- For type G staples, 6-14 mm arm length
- With depth stop

Suitable for clamp type	G
56630...	Ident. No. 402
	●

Prod. Gr. 576

- Flush nose for use in corners and along edges
- Cable length: 2.4 m

Advantage:

- Ergonomic housing for fatigue-free working



STANLEY hammer stapler

Execution:

- For type G staples, 6-10 mm arm length
- Robust steel housing, optimum impact weight

Suitable for clamp type	G
Staple length	10 mm
56630...	Ident. No. 404
	●

Prod. Gr. 576

Advantage:

- Ergonomic handle for fatigue-free work



STANLEY Staples Type A and type G

Application:

Ident. No. 306–314: For filling hand-held stapler no. 56630 300

Ident. No. 406–414: For filling hand-held stapler

no. 56630 400, electric stapler no. 56630 402 and hammer stapler no. 56630 404.505.

Delivery:

Pack of 1000



Ident. No. 306–314



Ident. No. 406–414

General requirements \ Hand-held and electric staplers

Limb length (mm)				6	8	10	12	14
Clip type	Form		Ident. No.					
56630...	A	Round	Ident. No.	306	308	310	312	314
56630...	G	Flat	Ident. No.	406	408	410	412	414

Prod. Gr. 576

ORION® Spark plug brushes

Brass, stainless steel or nylon edging



Ident. No. 500-510



Ident. No. 520



Ident. No. 530

Material of the wire		Brass	Brass	Stainless steel	Nylon
Number of rows (PCS)		3	4	3	3
Length (mm)		150	200	150	150
Length of bristles (mm)		15	18	15	15
Wire Ø (mm)		0.15	0.15	0.15	0.30
56710...	Ident. No.	500	510	520	530

Prod. Gr. 598

ORION® File brush

File brush band, bonded

Execution:

- File brush band, stuck on

- Brush strip size: 115 x 40 mm

Length (mm)	Ident. No.
250	500

Prod. Gr. 598



ORION® Wire hand brushes

Steel, stainless steel and brass wire

Application:

For cleaning cast iron pieces, files and for brushing a wide array of parts and surfaces.

Technical data:

- Length of bristles: 25 mm
- Wire diameter: 0.3 mm
- Length: 290 mm

Execution:

- Body made of certified beech wood



Number of rows (PCS)			1	2	3	4	5	6
Width (mm)			15	22	30	35	40	45
56725...	Steel	Ident. No.	510	520	530	540	550	560
56726...	Stainless steel	Ident. No.	510	520	530	540	550	560
56727...	Brass	Ident. No.	-	520	530	540	550	-

Prod. Gr. 598

ORION® Precision brushes

Application:
For cleaning uneven surfaces.

Execution:

- **Ident. No. 500–510:**
 - With high trim density
 - 20-mm wide brush head, trim length 110 mm

- **Ident. No. 520–530:**
 - With a high bristle density
 - Brush head (20 mm wide), bristle length of 110 mm

Technical data:

- Length: 225 mm



Ident. No. 500



Ident. No. 510



Ident. No. 520



Ident. No. 530

Material of the bristles	Horsehair	Nylon	Brass	Stainless steel
Number of rows (PCS)	3	4	3	3
56735... Ident. No.	500	510	520	530

Prod. Gr. 598

ORION® Universal hand brushes

Application:
For cleaning cast iron pieces, files and for brushing a wide array of parts and surfaces.

Execution:

- With ergonomic plastic handle

Technical data:

- Number of rows: 1 PCS
- Length of bristles: 28 mm
- Wire diameter: 0.3 mm
- Width: 15 mm
- Length: 260 mm



	Material of the wire	Ident. No.
56740...	Steel	500
56740...	Stainless steel	510

Prod. Gr. 598

LESSMANN® ROKI professional hand brushes

Application:
Extremely tough brush for cleaning weld seams and for removing brake dust on brake callipers.

Advantage:

- With ergonomic two-component handle

Technical data:

- Number of rows: 2 PCS
- Length of bristles: 22 mm
- Width: 10 mm
- Length: 225 mm



Wire Ø (mm)	Material of the wire	Ident. No.	0.35	0.25
56740...	Steel	600	-	-
56740...	Stainless steel	610	-	-
56740...	Brass	-	-	620

Prod. Gr. 598

LESSMANN® Cylindrical hand brushes

Application:
For deburring and cleaning bores and pipes.

Execution:

- With eyelet
- For manual use
- **Ident. No. 005–090:** Edging: Corrugated steel

- **Ident. No. 095–190:** Edging: Corrugated brass
- **Ident. No. 195–290:** Edging: Smooth nylon

Technical data:

- Filling length: 100 mm
- Length: 300 mm



Ident. No. 005–090



Ident. No. 095–190



Ident. No. 195–290

General requirements \ Brushes and brooms

Material of the wire	Steel	Steel	Steel	Steel	Steel	Steel	Steel	Steel
Ø (mm)	3	4	6	8	10	15	20	25
Wire Ø (mm)	0.08	0.1	0.1	0.1	0.15	0.15	0.15	0.20
56741... Ident. No.	005	010	020	030	040	050	060	065
Material of the wire	Steel	Steel	Steel	Brass	Brass	Brass	Brass	Brass
Ø (mm)	30	40	50	3	4	6	8	10
Wire Ø (mm)	0.20	0.25	0.30	0.10	0.10	0.10	0.12	0.15
56741... Ident. No.	070	080	090	095	100	110	120	130
Material of the wire	Brass	Brass	Brass	Brass	Brass	Brass	Nylon	Nylon
Ø (mm)	15	20	25	30	40	50	3	4
Wire Ø (mm)	0.15	0.15	0.20	0.20	0.25	0.30	0.10	0.20
56741... Ident. No.	140	150	160	170	180	190	195	200
Material of the wire	Nylon	Nylon	Nylon	Nylon	Nylon	Nylon	Nylon	Nylon
Ø (mm)	6	8	10	15	20	25	30	40
Wire Ø (mm)	0.20	0.20	0.25	0.30	0.30	0.35	0.35	0.35
56741... Ident. No.	210	220	230	240	250	260	270	280
Material of the wire	Nylon							
Ø (mm)	50							
Wire Ø (mm)	0.35							
56741... Ident. No.	290							

Prod. Gr. 598

ORION® dustpans

Execution:

- Ident. No. 500:
 - With wooden handle
 - No lip
 - Painted black
- Ident. No. 510:
 - Metal dustpan and handle
 - With rubber lip



Ident. No. 500



Ident. No. 510

Material		Sheet steel	Sheet steel
Material of the grip handle		Wood	Metal
56750... Ident. No.		500	510

Prod. Gr. 598

ORION® Wooden hand brush

Execution:

- Stable and durable wooden body
- Wear-resistant and dense bristles



Ident. No. 610



Ident. No. 620

Material of the bristles		Coconut	Coconut	Horsehair	Horsehair	Arenga
Length (mm)		280	430	280	430	430
56737... Ident. No.		520	620	510	610	630

Prod. Gr. 598

ORION® factory and workshop broom

Application:

Ident. No. 010-020, 050-060: For dry floors
Ident. No. 030-040: For concrete, industrial and wooden floors
Ident. No. 070-080: For rough indoor and outdoor floors

Execution:

- **Ident. No. 030-040:** Resistant to oil and alkalis
- **Ident. No. 070-080:** Wet- and oil-resistant fibres

Delivery:

With handle holder, without handle; please order separately



Ident. No. 010-020



Ident. No. 030-040



Ident. No. 050-060



Ident. No. 070

Width (mm)	Material of the bristles		400	600
56760...	Coconut	Ident. No.	010 ●	020 ●
56760...	Elaston	Ident. No.	030 ●	040 ●
56760...	Artificial fibre bristle	Ident. No.	050 ●	060 ●
56760...	Arenga	Ident. No.	070 ●	080 ●

Prod. Gr. 598

Accessories for			56760 010	56760 020	56760 030	56760 040	56760 050	56760 060	56760 070
56760... handle	1400-mm broom	Ident. No.	110 ●	-	110 ●	-	110 ●	-	110 ●
56760... handle	1500-mm broom	Ident. No.	-	120 ●	-	120 ●	-	120 ●	-

Accessories for			56760 080
56760... handle	1400-mm broom	Ident. No.	-
56760... handle	1500-mm broom	Ident. No.	120 ●

ORION® Squeegee

Application:

For pushing liquids together

Delivery:

With handle holder, without handle; please order separately



Execution:

- Metal body with robust handle holder
- With double foam/rubber lip

- Technical data:**
- Material: Metal

Width (mm)		450	600
56761...	Ident. No.	010 ●	020 ●

Prod. Gr. 566

Accessories for			56761 010	56761 020
56760... handle	1400-mm broom	Ident. No.	110 ●	110 ●

ORION® tool and device holder rust-proof

Application:

Space-saving storage and organisation

- Five plastic-coated brackets, can be moved along the bar

Execution:

- Brackets provide secure hold
- Simple wall mounting

- Technical data:**
- Width: 30 mm
 - Length: 500 mm



56762...	Ident. No.	010 ●
----------	------------	----------

Prod. Gr. 504

ORION® Swarf hooks

Application:

For safely removing chips from processing machines.

- **Ident. No. 450–600:** With deep plastic hand guard for increased safety

Execution:

- **Ident. No. 010–020:** Hands protected with flat steel plate

Technical data:

- Blade diameter: 8 mm



Ident. No. 010–020



Ident. No. 450–600

Blade length (mm)		300	500	350	500
Material of the grip handle		1-component plastic	1-component plastic	Wood	Wood
56780...	Ident. No.	010	020	450	600

Prod. Gr. 565

ATORN® Professional cordless work floodlight

Application:

Extremely robust lamp for heavy-duty use – light metal body with rubberised protective rim

- Charging status and residual capacity display
- Charging option via barrel connector socket/USB output: 5 V

Execution:

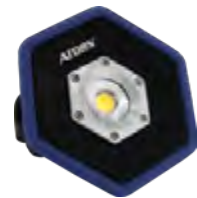
- Effective lighting duration when plugged into the mains: 24 h, when battery operated: 6–8 h
- Li-ion battery pack, 11.1 V
- Switching stages: Low 20%/Middle 45%/High 100%
- Fold-out foot to hang up or place in upright position

Advantage:

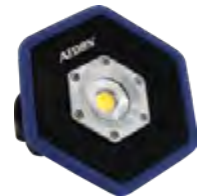
- Continuous light during day and night – possible to have the lights on and charge at the same time

Technical data:

- IP protection class: IP 54



Ident. No. 100



Ident. No. 400

Length (mm)	190	237
Luminous flux (lm)	1000	4000
Length x width x height	190 x 209 x 60 mm	237 x 265 x 73 mm
56797...	Ident. No.	100 400

Prod. Gr. 5HD

ATORN® LED professional workshop lamp Battery operated

Execution:

- robust, splash-proof housing with rubberised gripping surface
- 2 folding hooks that can be rotated by 360°
- 2 holding magnets on the back, 1 magnet on the bottom
- switch functions: 1. front auxiliary light, 2. 100% main light, 3. 50% main light, 4. off

- lamp base can be rotated by 180° and locked in eight positions
- with battery status and remaining charge indicator
- 3.7-V/2600-mAh Li-ion battery, charged via a 5-V Micro USB socket
- effective lighting duration of 6 hours, charging time of 4 hours



Length (mm)	266
Luminous flux (lm)	440
Length x width x height	266 x 48 x 32 mm
IP protection class	IP 54
56829... Ident. No.	025

Prod. Gr. 5HD

ATORN® LED slim professional inspection light

Battery operated

Execution:

- Robust, splash-proof housing with rubberised gripping surface
- Lamp head with slim aluminium housing
- Ball joint (+/- 45° tilt, rotatable through 360°) with strong retaining magnet on the bottom
- switch functions: 1. front auxiliary light, 2. 100% main light, 3. 50% main light, 4. off
- Hook (can be folded out by 210°, rotatable using the ball joint)
- Auxiliary light in lamp head, 120 lm

- 3.7-V/2600-mAh Li-ion battery, charged via a 5-V Micro USB socket
- Effective lighting duration of 6 hours, charging time of 4 hours
- With battery status and remaining charge indicator

Technical data:

- Length: 384 mm
- Luminous flux: 600 lm
- Length x width x height: 384 x 41 x 45 mm
- IP protection class: IP 54



56829... Ident. No.	050
-----------------------	-----

Prod. Gr. 5HD

ATORN® LED professional folding lamp

Battery operated

Execution:

- robust, splash-proof plastic housing with rubberised gripping surface
- belt clip on the bottom with retractable hook that can be rotated by 360°
- holding magnet on the bottom
- switch functions: 1. 100% main light, 2. 50% main light, 3. off
- flexible joint can be rotated by 340° and locked in 12 positions
- with battery status indicator

- 3.7-V/1550-mAh Li-ion battery, charged via a 5-V Micro USB socket
- effective lighting duration of 10 hours, charging time 4.5 hours

Technical data:

- Length: 131 mm
- Luminous flux: 220 lm
- Length x width x height: 131 x 66 x 28 mm
- IP protection class: IP 54



56829... Ident. No.	035
-----------------------	-----

Prod. Gr. 5HD

SCANGRIP® LED work lamps

Application:

For individual lighting of dark areas for mobile tasks.

Execution:

- Powerful and uniform lighting thanks to COB-LED light strip
- Lamp head can be swivelled 180°
- Fastening using rotating hook or magnet
- Brightness can be adjusted to two levels: 50% and 100%
- Main lamp: 100-200 lumen, spotlight: 75 lumen

- Li-ion battery

Delivery:

With USB charging cable

Technical data:

- Model: MINIFORM
- Length: 115 mm
- Luminous flux: 110 lm
- Nominal voltage: 3.7 V/DC
- IP protection class: IP 65



56831... Ident. No.	015
-----------------------	-----

Prod. Gr. 5IC

ATORN® LED machine and workstation lamp
Voltage 230 V/AC/50 Hz

Execution:

- Voltage 230 V, 50 Hz
- Lamp head and base made from impact-resistant, non-flammable plastic
- Anodised aluminium star-shaped heat dissipator and lens holder
- Switch integrated in the lamp head
- colour temperature 4000 K

- Enormous light output and long LED service life

- 1.6-m connection cable

Advantage:

- Infinitely adjustable focus for spot or wide beam

Delivery:

With extra-strong magnetic clamp and screw clamp with star-shaped grip



Power rating (W)	3
Arm length (mm)	590
IP protection class	IP 20
56870...	Ident. No. 010

Prod. Gr. 5HD

LED universal lamps and machine lamps

Execution:

- Uses little energy
- Long service life
- Low heat generation
- **Ident. No. 700:**
 - 3 x 2 W lamp
 - Flexible metal hose arm
 - 360 lumen light output

- **Ident. No. 710, 730:** Articulated arm with large throat depth
- **Ident. No. 710-720:** Transformer integrated in the lamp head
- **Ident. No. 730:**
 - cable length: 1.5 m
 - Transformer integrated in the socket

Advantage:

- **Ident. No. 710-730:** Lubricants and coolants do not burn into the protective glass



Ident. No. 700



Ident. No. 710



Ident. No. 720



Ident. No. 730

Power rating (W)		6	12	12
Arm length (mm)		520	800	30
IP protection class		IP 20	IP 65	IP 65
56871...	100-277 V/50-60 Hz	Ident. No. 700	-	-
56871...	24 V AC/DC	Ident. No. -	710	720
56871...	120-277 V/50-60 Hz	Ident. No. -	730	-

Prod. Gr. 5ID

Accessories for			56871 700	56871 710	56871 720	56871 730
56871...	Screw clamp for side fixing	Ident. No.	701	625	625	731
56871...	Magnetic base	Ident. No.	702	-	-	-
56871...	Wall bracket	Ident. No.	-	615	615	732

halogen workstation lamps with flexible lamp arm, 230 V 50 Hz

Execution:

- Switch integrated in the lamp head
- Lamp head and housing made from impact-resistant, non-flammable plastic
- No. 56879 100-56879 110:** Connection line 1.6 m H03VVH2-F, 230 V
- No. 56879 100-56879 110, 56880 010:**
 - Multi-purpose low voltage lamp with flexible lamp arm
 - Powerful luminosity and glare-free light for precise work
 - Safety transformer integrated in the base of the lamp
 - Base height 88 mm, lamp-head length 83.5 mm
 - Halogen lamp 12 V/20 Watt/G4 base

No. 56879 120:

- Powerful luminosity and large light field
- Flexible gooseneck tube made of metal, with rubber coating
- Ballast unit integrated in the base of the lamp
- Base height 111 mm, lamp-head length 288 mm
- Compact 11-W fluorescent tubes/G23 base
- No. 56879 120-56880 010:** Connection line 1.6 m H03RN-F, 230 V
- No. 56880:** Including safety glass cover and reinforced connecting cable

Delivery:

With connection cable, magnet, screw clamps, screws



No. 56879 100-56879 110, 56880 010



No. 56879 120

Power rating (W)			20	11
Arm length (mm)			420	700
IP protection class			IP 20	IP 40
56879...	Halogen broad beam lamp	Ident. No.	100 ●	-
56879...	Halogen spot beam lamp	Ident. No.	110 ●	-
56879...	Cold light	Ident. No.	-	120 ●
56880...	Halogen	Ident. No.	010 ●	-

Prod. Gr. 5ID

Accessories for			56879 100	56879 110	56879 120	56880 010
56879...	Halogen bulb	Ident. No.	105 ●	115 ●	-	105 ●
56879...	Safety glass cover	Ident. No.	200 ●	-	-	-
56879...	Cold light lamp	Ident. No.	-	-	125 ●	-

LED workstation lamps, "Spotlight" and "Flexi" models with flexible lamp arm, 230 V 50 Hz

Execution:

- LED module up to 700 lumen, glare- and flicker-free, colour temperature: daylight white, approx. 5500 Kelvin
- Flicker-free and low reflection, 120-degree uniform illumination, with wall power supply unit. 24 V supply.
- Rubber-coated 66-mm magnetic base with adhesive force of 180 N
- Cover made of acrylic, total length 600 mm, lamp head 65 mm
- Chip life min. 50,000 hours.
- Ref. no. 140: No dimmer

- Ref. no. 142: With dimmer (continuously variable)

Advantage:

- Waterproof and extremely robust
- Magnetic rubber base - prevents scratches to coated surfaces
- Made in Germany - high-quality product for demanding industrial use

Technical data:

- Power rating: 4.5 W
- Arm length: 500 mm
- IP protection class: IP 65
- Dimmable: No



56879...	LED broad beam lamp	Ident. No.	140 ●
-----------------	---------------------	------------	-----------------

Prod. Gr. 5ID

Bauer & Böcker LED workstation lamps, "Highlight" and "Floodlight" models
with flexible lamp arm, 230 V 50 Hz

Execution:

- High-performance chip with lamp life of min. 50,000 operating hours
- Ident. No. 150:**
 - LED module with very low power consumption
 - Streamlined shape, for universal use
 - Protected against splash water and dust, with power supply unit
 - Glare- and flicker-free light, low-reflection, 160-degree uniform illumination
 - 400-lumen light output, colour temperature: daylight white, approx. 5500 Kelvin
 - Rubber-coated 66-mm magnetic base with adhesive force of 180 N
 - Lamp head 90 x 30 x 13 mm, total length 620 mm
 - Ref. no. 150: No dimmer
 - Ref. no. 152: With dimmer (continuously variable)
- Ident. No. 160:**
 - LED light, with flexible light arm, rubber-coated
 - Low power consumption and low heat generation
 - Solid and robust design for heavy-duty use

- Glare and flicker-free light, low reflection, with 24 V power supply
- Luminous flux: 1200 lumen, colour temperature: daylight white, approx. 5500 Kelvin, 160 degree uniform illumination
- 88-mm magnetic base with 420 N adhesive force
- Total length 850 mm, light head 175 x 50 x 25 mm
- Ref. no. 160: No dimmer
- Ref. no. 162: With dimmer (continuously variable)

Advantage:

- Waterproof and extremely robust
- Magnetic rubber base - prevents scratches to coated surfaces
- Made in Germany - high-quality product for demanding industrial use

Technical data:

- IP protection class: IP 65
- Dimmable: No



Ident. No. 150



Ident. No. 160

Power rating (W)		2.5	10
Arm length (mm)		550	700
56879...	Highlight model	Ident. No. 150	-
56879...	Floodlight model	-	Ident. No. 160

Prod. Gr. 5ID

ATORN® high-performance LED hand lamps
batteries or rechargeable batteries

Execution:

- Ident. No. 002:**
 - Anodised aluminium housing
 - Light and strong
 - Durable and powerful CREE LED
- Ident. No. 005:** Rubberised push-button switch at the lamp end
- Ident. No. 005-007:**
 - Light beam can be focused with infinite adjustment by moving the lamp head
 - Sturdy aluminium lamp, steel retaining clip
- Ident. No. 007:**
 - Push button at the lamp end, with simultaneous strong magnetic function
 - 3 switchable light modes
 - The micro-USB charging input is protected by a sliding cover

- Small LED at the side to indicate the charging status
- Ident. No. 010:**
 - high-performance Cree LED 5 W
 - Light beam can be focused using one hand
 - Waterproof and dust-proof, protection class IP 66
 - 4 light levels

Delivery:

- Ident. No. 002:** Includes AAA batteries
- Ident. No. 005:** Including 2 x AAA batteries
- Ident. No. 007:** Includes battery and USB charging cable
- Ident. No. 010:** Lamp, 230-V charger, 12/24-V adapter, fabric belt pouch, operating instructions



Ident. No. 002



Ident. No. 005



Ident. No. 007



Ident. No. 010

Length (mm)	91	140	126	157
Luminous flux (lm)	55	100	110	230
Lighting range (m)	35	30	80	150
Material	Aluminium	Aluminium	Aluminium	Aluminium
Colour	Black	Black Blue	Black Blue	Blue
Type of rechargeable battery/battery	Alkali	Alkali	Li-Ion	Li-Ion
Number of rechargeable batteries/batteries	1	2	-	-
Rechargeable battery/battery designation	1.5 V Micro AAA	1.5 V Micro AAA	-	-
56801...	Ident. No. 002	Ident. No. 005	Ident. No. 007	Ident. No. 010

Prod. Gr. 5HD

ATORN® LED inspection lamps

With bending head

Application:
for illuminating and finding scratches, dirt or leaks

- Execution:**
- with two LEDs – can be switched with two separate switches.
 - 2. switching: UV LED (black light 395 nm)
 - bendable lamp head, strong magnet in the lamp base
 - Protection class IP 54
 - **Ident. No. 110:** 1. switching: CRI 95 LED with true-colour, warm light
 - **Ident. No. 120:** 1. switching: CREE LED with three stages of natural, warm light at 25, 50 and 100%

Delivery:
Battery included

Notes:
Ident. No. 110: Espresso Milano coffee.

- Technical data:**
- Material: Aluminium
 - Colour: Dark grey
 - Type of rechargeable battery/battery: Alkali
 - Rechargeable battery/battery designation: 1.5 V Mignon AA



Ident. No. 110



Ident. No. 120



Length (mm)	112	150
Luminous flux (lm)	70	300
Lighting range (m)	25	66
Number of rechargeable batteries/batteries	1	3
56801... Ident. No.	110	120

- Prod. Gr. 5HD
Set of 8 screwdrivers
➔ ATORN mobile tool case
➔ With set of four pliers and
☎ With FREE added extra: 1000 g

ATORN® LED torch

Application:
Robust aluminium housing

- Execution:**
- Rubberised pressure switch on the side
 - Switch: 100%/off
 - Touch functions: 50%/25%/strobe/SOS

Delivery:
Batteries not included

- Technical data:**
- Length: 155 mm
 - Luminous flux: 215
 - Colour: Black
 - Type of rechargeable battery/battery: AIMn
 - Number of rechargeable batteries/batteries: 3
 - Rechargeable battery/battery designation: Micro AAA



56804... Ident. No.	115
-----------------------	-----

Prod. Gr. 5HD

ATORN® head lights

batteries or rechargeable batteries

- Execution:**
- **Ident. No. 300:**
 - Rubberised push switch at the lamp head
 - 2 switchable light modes, battery compartment in the lamp head
 - Textile headband and additional interchangeable rubber headband for the helmet insert
 - Housing made of robust ABS plastic
 - **Ident. No. 305:**
 - Switch: Main light low, main light high, off – or via sensor: On/Off
 - Weighs only 110 g, but is a robust head lamp
 - 3.7 V battery can be charged via micro USB jack
 - Swivel-mounted luminous element
 - Protection class IP 65
 - **Ident. No. 310:**
 - Robust aluminium housing, push switch on the lamp head

- 4 light modes (high, medium, low, strobe)
- Battery on the back of the head placed in a robust ABS housing with additional red signal lamp
- Textile headband, adjustable for optimum comfort
- With battery status display via LEDs and overload protection
- 3.7 V rechargeable battery with 2600 Ah

- Advantage:**
- **Ident. No. 305:** Switches on/off by sensor to keep both hands free
 - **Ident. No. 310:** Extra-long 8-hour illumination duration

- Delivery:**
- **Ident. No. 300:** Incl. 3 x AAA batteries and 2 head bands
 - **Ident. No. 305:** Incl. USB charging cable
 - **Ident. No. 310:** incl. USB charging cable



Ident. No. 300



Ident. No. 305



Ident. No. 310

General requirements \ Hand-held and machine lamps

Luminous flux (lm)	100	280	350	
Lighting range (m)	50	60	80	
Type of rechargeable battery/battery	Alkali	Li-Ion	Li-Ion	
Number of rechargeable batteries/batteries	3	-	-	
Rechargeable battery/battery designation	1.5 V Micro AAA	-	-	
56808...	Ident. No.	300	305	310

Prod. Gr. 5HD

PARAT safety lamps

Execution:

- Explosion-protected cordless torch
- 100% waterproof, dust-proof and air-tight
- Rubberised light head
- Rubberised rear switch for one-handed operation
- Ident. No. 420:** Tested and certified according to the latest standards (ATEX Zone 1)
- Ident. No. 420, 440-450:** White LED
- Ident. No. 420-425:**
 - Robust PC housing (not conductive) with fastening clip
 - Handy ATEX-certified, pen-size safety lamp
- Ident. No. 425:**
 - White, highly luminous LED
 - Tested and certified according to the latest standards (ATEX Zone 2)

Ident. No. 440:

- Robust PC housing (not conductive)
- Tested and certified according to the latest standards (ATEX Zone 1 and DustEx Zone 21)

Ident. No. 440-450:

- Fixture to fasten to a helmet

Ident. No. 450:

- Housing made from highly resistive, conductive XAG plastic, ESD approval
- Tested and certified according to the latest standards (ATEX Zone 0 and DustEx Zone 21)

Delivery:

With batteries

Technical data:

- Type of rechargeable battery/battery: AIMn



Ident. No. 420



Ident. No. 425



Ident. No. 440



Ident. No. 450

Model	PX2 LED	PX3 LED	PX1 LED	PX1 LED/ESD	
Length (mm)	143	154	167	167	
Luminous flux (lm)	30	60	120	120	
Lighting range (m)	35	100	150	150	
Colour	Neon yellow	Neon yellow	Neon yellow	Red	
Number of rechargeable batteries/batteries	2	2	4	4	
Rechargeable battery/battery designation	Micro AAA	Mignon AA	Mignon AA	Mignon AA	
56809...	Ident. No.	420	425	440	450

Prod. Gr. 5IB

LEDLENSER LED high-performance penlights

With attachment clip

Execution:

- Ident. No. 010:**
 - Compact torch with classic focusing
 - Excellent luminescence
 - Weights just 38 g
- Ident. No. 010, 020:** With attachment clip
- Ident. No. 015:**
 - Optimised performance – with very high light output
 - Light beam can be adjusted via the Advanced Focus System
 - Economical and ecological – rechargeable
 - With energy status display

Ident. No. 020:

- Mini torch for professionals
- Light beam can be focused by turning the lamp head

Ident. No. 023:

- Mini light stick with excellent light output for professionals
- Focus of light beam adjustable via the Advanced Focus System

Delivery:

Ident. No. 010, 020: Includes batteries

Ident. No. 015: Battery pack set, charging station, wrist strap

Ident. No. 023: Battery pack, pocket clip



Ident. No. 010



Ident. No. 015



Ident. No. 020



Ident. No. 023

Model	P 2	P 3 R	P 4	P 4 X
Length (mm)	96	102	140	140
Luminous flux (lm)	14	140	20	120
Lighting range (m)	23	100	27	80
Material	Aluminium	Aluminium	Aluminium	Aluminium
Colour	Black	Black	Black	Black
Type of rechargeable battery/battery	AlMn	Li-Ion	AlMn	Alkali
Number of rechargeable batteries/batteries	1	1	2	2
Rechargeable battery/battery designation	Micro AAA	-	Micro AAA	Micro AAA
56811...	Ident. No.	010	020	023

Prod. Gr. 5IA

Source: Hahn+Kolb Werkzeuge GmbH

Technical data subject to change.

Availability subject to country specific rules and regulations.

1380

www.iconridge.com

 **ICON RIDGE**

LEDLENSER LED high-performance lamps

Execution:

- High End Power LED
- **Ident. No. 026:**
 - Aluminium housing protected against splash water
 - Dynamic Switch ‚Power‘ and ‚Low Power‘ light modes
 - Removable guard to prevent rolling away
- **Ident. No. 026–032, 042:** Advanced Focus System
- **Ident. No. 032:**
 - The energy wonder for power-conscious users
 - Operated with just one AA Mignon battery
 - Speed Focus using one hand
- **Ident. No. 037:**
 - Advanced Focus System, 3 light functions
 - Extremely bright light thanks to highly precise reflector lens

- Operated using a rechargeable Li-ion battery
- Can be easily recharged up to 1000 times
- **Ident. No. 042:**
 - 3 brightness settings
 - Handy switch at the end of the lamp
 - Focused, extremely far-reaching light
 - The excellent all-rounder

Delivery:

- Ident. No. 026:** Includes batteries and hand strap
- Ident. No. 032:** Battery, wrist strap, belt bag
- Ident. No. 037:** Battery pack set, charging station, USB cable, belt bag, wrist strap
- Ident. No. 042:** Battery pack, belt bag, wrist strap



Model	TT	P 5	P 5 R	P 7
Length (mm)	116	113	117	130
Luminous flux (lm)	280	140	420	450
Lighting range (m)	220	120	240	300
Material	Aluminium	Aluminium	Aluminium	Aluminium
Colour	Black	Black	Black	Black
Type of rechargeable battery/battery	AlMn	Alkali	Li-Ion	Alkali
Number of rechargeable batteries/batteries	3	1	2	4
Rechargeable battery/battery designation	Micro AAA	Mignon AA	-	Micro AAA
56811...	Ident. No. 026	032	037	042

Prod. Gr. 5IA

LEDLENSER LED high-performance head lamps

Execution:

- High End Power LED
- **Ident. No. 101–111:**
 - Advanced Focus System
 - Infinitely variable dimming function
 - Swivel-mounted head
 - The materials used and the ergonomic shape ensure optimum comfort
- **Ident. No. 111:**
 - Long-lasting li-ion battery
 - Convenient charge indicator
- **Ident. No. 113:**

- Operated with 3 x AAA NiMh batteries
- Advanced Focus System, Speed Focus
- Dimmable

Delivery:

- Ident. No. 101:** Includes batteries
- Ident. No. 111:** With charger
- Ident. No. 113:** Battery pack set, USB charging cable

Technical data:

- Number of rechargeable batteries/batteries: 3



Model	H 7.2	H 7R.2	H 8 R
Luminous flux (lm)	250	300	600
Lighting range (m)	160	160	150
Material	Plastic	Plastic	Plastic/aluminium
Colour	Black	Black	Black Red
Type of rechargeable battery/battery	AlMn	Li-Ion	NiMH
Rechargeable battery/battery designation	Micro AAA	Li-Ion	1.2 V NiMH AAA
56811...	Ident. No. 101	111	113

Prod. Gr. 5IA

VARTA HIGH ENERGY battery
Alkaline-manganese AIMn

Execution:

- Ref. no. 011 and 021 – blister pack of 4

- Ref. no. 031 and 041 – blister pack of 4

- Ref. no. 051 – blister pack of 1



Ident. No. 011



Ident. No. 021



Ident. No. 031



Ident. No. 041



Ident. No. 051

Type	AAA	AA	Baby	Mono	Electric block
Nominal voltage (V/DC)	1.5	1.5	1.5	1.5	9
56815... Ident. No.	011	021	031	041	051

Prod. Gr. 568

DURACELL Procell high-tech alkaline batteries

10-pack

Delivery:

Pack of 10



Ident. No. 060



Ident. No. 070



Ident. No. 080

Type	AAA	AA	Electric block
Nominal voltage (V/DC)	1.5	1.5	9
56815... Ident. No.	060	070	080

Prod. Gr. 568

VARTA Long-life rechargeable batteries/power rechargeable batteries
Nickel metal hybrid (NiMH), ready to use

Execution:

- Ref. no. 112, 122, 132, 142 – blister pack of 2

- Ref. no. 151 – blister pack of 1



Ident. No. 112



Ident. No. 122



Ident. No. 132



Ident. No. 142



Ident. No. 151

Type	AAA	AA	C	D	Electric block
Nominal voltage (V/DC)	1.2	1.2	1.2	1.2	8.4
Rechargeable battery/ battery capacity (mAh)	800	2100	3000	3000	170
56815... Ident. No.	112	122	132	142	151

Prod. Gr. 568

VARTA round cells/special battery



Ident. No. 200



Ident. No. 202



Ident. No. 203-295

Type	V 13 GS/357/ SR 44	V 23 GA	V 392	CR 2016	CR 2025	CR 2032	CR 2430	CR 2450
Nominal voltage (V/DC)	1.55	12	1.55	3	3	3	3	3
Rechargeable battery/battery capacity (mAh)	180	38	38	90	170	230	280	560
56815...	Ident. No. 200	202	203	208	209	210	290	295

Prod. Gr. 568

ORION® Set of digit and letter stamps
For manual use without depth limitation

Application:

For labelling parts.

- Close-spaced lettering
- Hardness at end of writing: 58-60 HRC
- Maximum strength: 1200 N/mm²
- Nickel-plated

Execution:

- Standard lettering
- Left-engraved
- DIN 1451 typeface

Delivery:

In plastic box



Character height (mm)				2	3	4	5	6	8	10
Length x width x height				7 x 7 x 75 mm	8 x 8 x 75 mm	9 x 9 x 80 mm	10 x 10 x 80 mm	12 x 12 x 85 mm	14 x 14 x 90 mm	16 x 16 x 90 mm
Surface				Nickel-plated	Nickel-plated	Nickel-plated	Nickel-plated	Nickel-plated	Nickel-plated	Nickel-plated
With depth limiter				No	No	No	No	No	No	No
	Character type provided	Number of stamps (PCS)								
56925...	Numbers	9	Ident. No.	720	730	740	750	760	780	800
56926...	Letters	27	Ident. No.	720	730	740	750	760	780	800

Prod. Gr. 577

ORION® Set of figure and letter stamps
For manual use with depth limitation

Application:

For labelling parts

- DIN 1451 typeface
- Close-spaced lettering
- Hardness at end of writing: 58-60 HRC
- Maximum strength: 1200 N/mm²
- Nickel-plated

Execution:

- With depth limit
- Standard lettering
- Exactly in the centre

Delivery:

In plastic box



Character height (mm)				1	1.5	2	2.5	3	4	5	6	8	10
Length x width x height				7 x 7 x 75 mm	7 x 7 x 75 mm	7 x 7 x 75 mm	7 x 7 x 75 mm	8 x 8 x 75 mm	8 x 8 x 75 mm	9 x 9 x 80 mm	11 x 11 x 80 mm	12 x 12 x 85 mm	14 x 14 x 90 mm
Surface				Nickel-plated	Nickel-plated	Nickel-plated	Nickel-plated	Nickel-plated	Nickel-plated	Nickel-plated	Nickel-plated	Nickel-plated	Nickel-plated
With depth limiter				Yes	Yes	Yes	Yes	Yes	Yes	Yes	Yes	Yes	Yes
	Character type provided	Number of stamps (PCS)											
56930...	Numbers	9	Ident. No.	010	015	020	025	030	040	050	060	080	100
56932...	Letters	27	Ident. No.	010	015	020	025	030	040	050	060	080	100

Prod. Gr. 577

DYMO® Labelling devices LabelManager 280 P and 420 P

Execution:

- **Ident. No. 032-033:**
 - PC connection option
 - QWERTY keyboard
 - Large display for 2 lines of label text
 - 3 fonts
 - 6 font sizes
 - 7 font styles
 - 8 box shapes
- **Ident. No. 036-037:**
 - Portable, high-performance label printer with PC connection
 - Four-line, backlit display
 - Printable barcodes
 - Labelling tape

Delivery:

- **Ident. No. 032, 036:** Electronic label printer, D1 starter label cartridge (black on white) 12 mm x 3 m, USB cable, battery set, quick user guide and warranty card.
- **Ident. No. 033:** Electronic label printer, 2 x black on white D1 tapes, 12 mm x 7 m, battery set, USB cable, charging adapter, quick user guide and manuals, warranty card
- **Ident. No. 037:** Electronic label printer, 4 x black on white D1 tapes, 12 mm x 7 m, battery set, USB cable, charging adapter, quick user guide and manuals, warranty card

Technical data:

- Belt type: D1
- Type of rechargeable battery/battery: Li-Ion



Ident. No. 032



Ident. No. 033



Ident. No. 036



Ident. No. 037

Model	LM 280	LM 280 SET	LM 420 P	LM 420 P SET
Suitable for band width	6 mm 9 mm 12 mm	6 mm 9 mm 12 mm	6 mm 9 mm 12 mm 19 mm	6 mm 9 mm 12 mm 19 mm
56959...	Ident. No. 032	033	036	037

Prod. Gr. 578

DYMO® Labelling device LabelManager 160 and LabelManager 210 d

Execution:

- Can be used as table set or as hand-held device
- Simple operation, logical navigation
- Manual tape cutter
- Extensive symbol selection

Delivery:

- 12-mm labelling tape, black on white, operating manual, without batteries, no mains adapter

Technical data:

- Belt type: D1
- Type of rechargeable battery/battery: NiCd



Ident. No. 041



Ident. No. 042

Model	LM 160	DYMO LM 210 d
Suitable for band width	9 mm 12 mm 6 mm	6 mm 9 mm 12 mm
56959...	Ident. No. 041	042

Prod. Gr. 578

Accessories for	56959 041	56959 042
56959... Mains adapter	Ident. No. 120	120

DYMO® D 1 label tapes for devices LM 280, LM 420, LM 160, LM 210, LM PnP

Execution:

- Durable plastic labels from a single cartridge (one-tape system)
- For equipment in the LM and LP model series

Technical data:

- Belt type: D1
- Length of tape: 7 m
- Material: PES - Polyester



Colour of tape		Transparent	White	Yellow	White	White	Blue	Red
Lettering colour		Black	Black	Black	Blue	Red	Black	Black
	Width of band (mm)							
56962...	6	Ident. No.	210	240	290	-	-	-
56962...	9	Ident. No.	110	140	190	150	160	170
56962...	12	Ident. No.	010	040	090	050	060	070
56962...	19	Ident. No.	310	340	390	350	360	370
56962...	24	Ident. No.	410	420	490	-	-	480

Colour of tape		Green	Transparent	Transparent
Lettering colour		Black	Blue	Red
	Width of band (mm)			
56962...	6	Ident. No.	-	-
56962...	9	Ident. No.	200	-
56962...	12	Ident. No.	100	020
56962...	19	Ident. No.	400	-
56962...	24	Ident. No.	-	-

Prod. Gr. 578

PARAT[®] PROFI-LINE toolboxes

Execution:

- Made of polypropylene, black
- Internal features: 1 end-to-end carrying handle with locking function
- 2 locks
- 1 small parts magazine, removable
- 1 tray, removable

- 1 fixture for a padlock

Delivery:

contains no tools

Technical data:

- Material: PP - Polypropylene

Internal length x internal width x internal height	440 x 230 x 235 mm	475 x 275 x 255 mm	585 x 290 x 280 mm	
55390...	Ident. No.	010	020	030

Prod. Gr. 51B



Contents not included

PARAT[®] Tool bags and tool backpack

Made of durable nylon fabric

Execution:

- Ident. No. 010:**
 - Tool bag with 8 tool compartments, 8 elastic loops and a spacious main compartment
 - Two large storage compartments inside the bag, 7 exterior compartments, two of which are lockable
 - Reinforced base with integrated glide runners
 - Low tare weight and high-quality carrying handles
- Ident. No. 020:**
 - Tool bag with 17 stitched tool compartments inside and outside as well as many other large and small storage compartments
 - Plastic-reinforced bag base
 - Metal carrying handle and additional shoulder strap
 - Protective cover made of nylon
- Ident. No. 030:**

- 24 tool compartments and 16 elastic loops and 4 spacious storage compartments
- Separate laptop compartment for devices up to 14 inches
- Plastic-reinforced base and padded back panel
- Padded carry strap, chest and waist belt
- Ident. No. 040:**
 - Round, bucket-like tool bag with large capacity
 - 12 internal and 37 external tool compartments
 - Practical carrying and shoulder strap

Delivery:

Ident. No. 010: With shoulder strap

Technical data:

- Colour: Black with red contrast



Ident. No. 010



Ident. No. 020



Ident. No. 030



Ident. No. 040



Length x width x height	400 x 350 x 280 mm	210 x 470 x 330 mm	240 x 300 x 340 mm	330 x 350 x 330 mm	
55467...	Ident. No.	010	020	030	040

Prod. Gr. 51B

textile tool bag open

with support rod and removable, padded shoulder strap

Execution:

Ident. No. 010:

- Combination of extremely sturdy polyester textile material and robust, watertight plastic floor.
- PVC overmould zipper for easy handling
- Numerous pockets, brackets and rubber straps for stowing various tools
- Water level bracket, Velcro strips for long tools
- Special bag for hand saw
- Soft, comfortable carrying handle

Ident. No. 100:

- With sturdy metal carrying handle and shoulder strap with wide shoulder pad
- With a variety of pockets and additional elastic strap attachment points
- Rigid and waterproof hard plastic base

Technical data:

- Material: Polyester fibre
- With carry belt: Yes



Ident. No. 010



Ident. No. 100

Internal length x internal width x internal height		470 x 355 x 230 mm	471 x 350 x 229 mm
55469...	Ident. No.	010	-
55469...	Ident. No.	-	100

BAHCO = Prod. Gr. 519
GEDORE = Prod. Gr. 530

ORION[®] ORION synthetic leather tool bag

Made from synthetic leather

Execution:

- With zip
- With rubber retaining straps
- Without contents
- Size when open: length x width 500 x 275 mm, when closed 240 x 275 x 35 mm

55400... | Ident. No. 010

Prod. Gr. 598

Delivery:

contains no tools

Technical data:

- Material: Faux leather



Contents not included

PARAT[®] PARAT tool bag made from synthetic leather

Made from synthetic leather, black

Execution:

- Black
- With zip
- 2 perforated panels
- 20 band clips
- Rubber band to fit the tools to suit your personal requirements
- Transparent compartment on the outside for business cards

55402... | Ident. No. 010

Prod. Gr. 51B

- Size when open: length x width 620 x 250 mm, when closed 310 x 250 x 30 mm

Delivery:

contains no tools

Technical data:

- Material: Faux leather



Contents not included

PARAT[®] Roll-up tool roll

Made of durable nylon fabric

Execution:

- Stitched tool compartments in different sizes
- Practical buckled belt, adjustable length, with snap-in closure
- Robust and wear-resistant nylon fabric

Delivery:

contains no tools

Technical data:

- Colour: Black with red contrast



Ident. No. 070



Number of compartments (PCS)	8	12	15	20
55405...	Ident. No. 050	060	070	080

Prod. Gr. 5IB

PARAT Universal tool bags

Cowhide, black, grained

Execution:

- Black, grained
- With snap-in locks
- Ring caps
- **Ident. No. 610:** Rear panel with 10 adjustable straps
- **Ident. No. 620:** Rear panel with 8 adjustable straps

Delivery:

contains no tools

Technical data:

- Material: Cowhide leather
- With carry belt: No



Internal length x internal width x internal height	370 x 110 x 250 mm	410 x 160 x 300 mm
55410...	Ident. No. 610	620

Prod. Gr. 5IB

PARAT Tool bag

With central partition, cowhide, black, grained

Execution:

- **Ident. No. 010:**
 - Black, grained
 - With carry strap for use as shoulder bag
 - With castors
 - Reinforced corners
 - Partition panel
 - With snap-in lock and compartments for tools
 - Transparent compartment in cover
 - With reinforced aluminium corners
- **Ident. No. 015:**
 - Made from extra-thick leather
 - Black, Con-Pearl®
 - Polypropylene side panels
 - Front, back and central panels with a total of 17 pockets

- Transparent keep-safe compartment in the cover
- Castors
- Adjustable carry strap
- Bag section with aluminium corner reinforcement

Advantage:

- **Ident. No. 015:** The 300-mm height also enables hammers or extra-long screwdrivers to be stored

Delivery:

contains no tools

Technical data:

- Material: Cowhide leather
- With carry belt: Yes



Ident. No. 010



Ident. No. 015

Number of compartments (PCS)	15	17
Internal length x internal width x internal height	220 x 140 x 250 mm	230 x 140 x 300 mm
55430...	Ident. No. 010	015

Prod. Gr. 5IB

PARAT  **Tool bags**
Cowhide, black, grained

Execution:

- Black, grained
- **No. 55435:**
 - The base and side panels are made of shatter-proof and moisture-resistant HDPE plastic
 - Main bag section reinforced with aluminium corners
 - Parat snap-in locks
 - Base shell
 - Handle
 - Ring caps for carry strap
 - Semi-fold-out front panel, with 11 loops
 - Rear panel with 9 fixed plastic loops
- **No. 55445:**
 - Reinforced panels and base

- Sheet steel base tray
- With castors
- Reinforced corners
- Ratchet locks
- CP-7 tool holders on the central and back panels.
- Fold-out front panel with zips
- With keep-safe compartment and pocket for small parts

Delivery:
contains no tools

Technical data:
▪ Material: Cowhide leather
▪ With carry belt: No



No. 55435
Contents not included



No. 55445
Contents not included

Number of compartments (PCS)		20	10
Internal length x internal width x internal height		420 x 160 x 250 mm	415 x 165 x 275 mm
55435...	Ident. No.	650	-
55445...	Ident. No.	-	020

Prod. Gr. 5IB

PARAT  **Tool bags**
With central panel, cowhide/ABS plastic, black, grained

Execution:

- Leather/ABS plastic, black, grained
- Bag section with aluminium corner reinforcement
- Semi-fold-out front and rear panels, contains CP-7 tool holders for tools up to 26 mm and 15 mm in diameter
- Handle hole
- Ratchet locks
- Ring caps


Delivery:
contains no tools

Technical data:
▪ Material: Cowhide leather
▪ Number of compartments: 10 PCS
▪ With rollers: No
▪ With carry belt: Optional
▪ Internal length x internal width x internal height: 460 x 210 x 340 mm



55448...	Ident. No.	060
----------	------------	-----

Prod. Gr. 5IB

PARAT  **Accessories for tool bags**

Execution:

- **Ident. No. 200:**
 - Black
 - Adjustable
- **Ident. No. 210:** For self-attachment on tool cases



Ident. No. 200



Ident. No. 210

55448...	Carrying strap	Ident. No.	200
55448...	Ring cap set	Ident. No.	210

Prod. Gr. 5IB

PARAT® Top Line tool bag with drawers with drawers

Execution:

- Black, grained
- With castors
- Snap-in locks
- Aluminium-reinforced case corners

- Semi-fold-out rear panel with CP-7 tool holder for tools up to 26 mm in diameter
- Removable tray
- With small parts compartments

Delivery:
contains no tools

Material	Faux leather
With rollers	No
With carry belt	No
Internal length x internal width x internal height	410 x 190 x 280 mm
55460...	Ident. No. 040

Prod. Gr. 51B



(Contents not included)

PARAT® Top Line tool bag with drawers with drawers

Execution:

- Black, grained
- Reinforced panels and base
- With castors
- Ratchet locks
- Drawer set, 5 pcs, with small parts compartments

- Partition compartment (90 mm) behind the drawers, includes tray
- Fold-out front panel
- Rear panel with CP-7 tool holder for tools up to 15 mm in diameter

Delivery:
contains no tools

Material	Cowhide leather
With rollers	No
With carry belt	No
Internal length x internal width x internal height	410 x 220 x 310 mm
55460...	Ident. No. 060

Prod. Gr. 51B



(Contents not included)

B&W International International synthetic leather tool bag made from synthetic leather, black

Execution:

- Black
- Case with removable central panel

- With 24 tool loops
- 11 tool loops on the rear panel, 10 tool pockets on the front panel.
- Empty weight: 2.8 kg

Material	Faux leather
Number of compartments (PCS)	24
With rollers	No
With carry belt	No
Internal length x internal width x internal height	430 x 320 x 190 mm
55470...	Ident. No. 010

Prod. Gr. 538



Contents not included

ATORN® Fabric tool shoulder bag with shoulder strap With removable tool boards

Application:

Mobile use, easy to keep organised with removable tool boards

Execution:

- Shoulder bag with shoulder strap

- 2 spacious outer pockets, equipped with two plastic assortment boxes, can be removed
- 2 tool boards that can be removed individually, equipped with plug-in rails
- Sturdy and durable Cordura Nylon fabric



55391...	Ident. No. 010
----------	----------------

Prod. Gr. 538

B&W International Tool bag

Execution:

- Made from extremely durable nylon
- High-quality and durable zips
- Splash-proof base
- Technician's notebook tool case with removable tool trays

- Handle and carry belt
- Lined inner pocket for safely carrying a laptop; a patch pocket with rip-tape fastening on each side
- Shielded compartment for documents

Delivery:
contains no tools



(Contents not included)

Length x width x height	450 x 450 x 200 mm
With rollers	No
Colour	Black
Capable of flying	No
55466...	Ident. No. 010

Prod. Gr. 538

B&W International Backpack

Execution:

- Made from extremely durable nylon
- High-quality and durable zips
- Splash-proof base
- Colour black
- Padded rucksack carry system with hip and chest belts

- Padded laptop sleeve
- Removable tool tray
- Front side can be folded up 90°

Delivery:
contains no tools



(Contents not included)

Length x width x height	350 x 350 x 230 mm
With rollers	No
Colour	Black
Capable of flying	No
55466...	Ident. No. 020

Prod. Gr. 538

ATORN® tool cases and wheeled cases
suitable for air transport, made of ABS plastic, black

Application:

Ident. No. 110: For practical transport of tools

Execution:

- **Ident. No. 020:**
 - Made of ABS plastic, black
 - With solid aluminium frame
 - Castors
 - Ratchet hinge
 - Anti-tilt cylinder locks
 - Tool trays made from Con-Pearl, with 25 pockets
 - 400-mm keep-safe compartment
 - Cover flap with 15 pockets and keep-safe compartment
 - Base tray with cover panel, can be divided as required
- **Ident. No. 110:**
 - Made of ABS plastic

- Black
- 4x telescopic drawer, 1050 mm in length
- Tool panel with 25 pockets and 400-mm keep-safe compartment
- Cover flap with 15 pockets and 400-mm keep-safe compartment
- Inner tray can be partitioned as required

Advantage:

- **Ident. No. 110:** Extremely stable and easy to pull/slide thanks to large rollers with large wheelbase

Delivery:
contains no tools



Ident. No. 020
(Contents not included)



Ident. No. 110
(Contents not included)

Internal length x internal width x internal height	470 x 180 x 360 mm	470 x 190 x 360 mm
Material	ABS	ABS
Capable of flying	Yes	Yes
55464...	Ident. No. 020	Ident. No. 110

Prod. Gr. 538

ATORN® mobile wheeled tool case suitable for air transport, made of ABS plastic

Application:
for practical tool transportation

Execution:

- made from ABS with user-friendly telescopic handle and 2 inline rollers
- robust aluminium frame with impact edge protection protects the tools and the case
- 2 toggle locks and Icode combination lock for security
- robust, comfortable carrying handle

- 4 additional feet prevent the shell from being scratched and improve stability
- hinged cover and security lid holder with catch
- document compartment in A4 format
- detachable tool panel with 23 tool compartments on front and rear
- removable cover panel with 15 tool compartments
- variable base shell (2 aluminium dividers, 4 end caps, 2 middle caps)

Advantage:

- Good handling, massive capacity, modern design



Internal length x internal width x internal height	485 x 375 x 200 mm
Load-carrying capacity (kg)	30
Volume (l)	36
Material	ABS
Capable of flying	Yes
Weight (kg)	6.6
55465... Ident. No.	150

Prod. Gr. 538

ATORN® Tool case

Execution:

- With one-sided tool panel and plug-in options in lid
- Stitched nylon pockets
- Sturdy aluminium frame, plastic floor glides
- Spacious base shell, freely dividable

- Comfortable carrying handle, lockable buckle locks

Technical data:

- Internal length x internal width x internal height: 450 x 318 x 140 mm



55463... Ident. No.	010
-----------------------	-----

Prod. Gr. 538

B&W International wheeled tool case

Execution:

- Case trays made from highly impact-resistant HDPE plastic
- Robust aluminium frame
- Hinge cover
- Removable lightweight plastic tool trays in the lid
- Lockable telescopic handle
- Lockable

- Inline rollers
- 2 detachable tool panels in cover with 23 pockets on front and rear
- Removable cover panel for base tray with 15 pockets, base tray can be partitioned as required, with cover panel, document compartment in lid

Delivery:

contains no tools



(Contents not included)

Length x width x height	510 x 390 x 230 mm
Material	HDPE - High density polyethylene
Capable of flying	Yes
55475... Ident. No.	020

Prod. Gr. 538



Wheeled case in king size format

Made from X-ABS plastic, extremely impact-resistant, suitable for air transport

Execution:

- Case trays made from X-ABS plastic, extremely tough, suitable for air transport
- 4x telescopic extension, 1050 mm in length, extra-wide, powder-coated
- Rubberised, large bearing-mounted rollers; wide wheel base
- Inner double aluminium frame
- Ratchet hinge
- Anti-tilt cylinder locks
- Castors
- Carrying capacity up to 40 kg
- Tool trays made from Con-Pearl
- **Ident. No. 010:** Tool tray with 25 pockets and 400-mm keep-safe compartment, tool tray with 10 pockets, cover panel with 15 pockets and 400-mm keep-safe compartment, inner tray can be

partitioned as required (approx. 88 mm in height), document compartment in lid, lockable lid holder

- **Ident. No. 020:** Tool tray with 31 pockets, tool tray with 12 pockets, cover panel with 19 pockets and 530-mm keep-safe compartment, base tray with partitioned compartment 560 x 90(67) x 223 mm and fixed compartment 540 x 57 x 140 mm, document compartment in lid, retaining straps for a spirit level in the lid and lockable lid holder

Advantage:

- Extremely tough
- Possible to push or pull the case
- Rubberised, large bearing-mounted rollers; wide wheel base as the case is rolled on its long side making it unlikely to tilt, and ensuring tools inside do not move around much

Delivery:

contains no tools



Ident. No. 010
(Contents not included)



Ident. No. 020
(Contents not included)

Internal length x internal width x internal height	470 x 210 x 360 mm	575 x 220 x 420 mm
Material	ABS	ABS
Capable of flying	Yes	Yes
55476...	010	020
Ident. No.	●	●

Prod. Gr. 51B



Tool case

Execution:

- Case shell made from highly impact-resistant ABS plastic
- Robust aluminium frame with edge protection against impact
- Tool panel with 23 pockets
- Cover panel with 15 pockets

- Separately dividable base tray with rigid dividers
- Document compartment in lid
- **Ident. No. 500:** 2 lockable anti-tilt locks, one 3-digit padlock
- **Ident. No. 600:**
 - 3 lockable anti-tilt locks, one 3-digit padlock
 - With inline rollers and telescopic handle



Ident. No. 500
(Contents not included)



Ident. No. 600

Internal length x internal width x internal height	455 x 160 x 345 mm	485 x 195 x 350 mm
Material	ABS	ABS
Capable of flying	No	No
55481...	500	600
Ident. No.	●	●

Prod. Gr. 538

PARAT Tool case

Made from X-ABS plastic, black, extremely impact-resistant, suitable for air transport

Execution:

- Made of X-ABS plastic
- Black
- Extremely tough
- Suitable for air transport
- With solid aluminium frame
- Castors
- Ratchet hinge with lock
- Anti-tilt cylinder locks
- Tool panel with 25 pockets and 400-mm keep-safe compartment
- **Ident. No. 010:** Tool tray with 10 pockets, cover panel with 15 pockets, 400-mm keep-safe

compartment, base tray with cover panel, height 58 mm, can be partitioned as required, document compartment in lid

- **Ident. No. 120:** Cover panel with 15 pockets, 400-mm keep-safe compartment, base tray with cover panel, height 88 mm, can be partitioned as required, document compartment in lid

Advantage:

- Robust
- Scratch-proof and dust-proof
- Washable

Delivery:

contains no tools



Ident. No. 010
(Contents not included)



Ident. No. 120

Internal length x internal width x internal height	460 x 190 x 310 mm	470 x 200 x 360 mm
Material	ABS	ABS
Capable of flying	Yes	Yes
55485...	Ident. No. 010	Ident. No. 120

Prod. Gr. 51B

KNIPEX "Basic" and "Basic Move" tool cases
Carrying and roller case

Execution:

- sturdy design, made from ABS material, black
- surrounding aluminium frame with D-rings for attaching the included carrying strap
- central combination lock and two integrated toggle locks, lockable
- sturdy carrying handle, metal hinges
- document compartment in lid
- removable tool panel with pockets

- base shell height 55 mm, cover panel with tool bags
- With sturdy inline conveyor rollers
- Sturdy telescopic extension

Technical data:

- Internal length x internal width x internal height: 515 x 280 x 430 mm
- Material: ABS



55474... | Ident. No. 020

Prod. Gr. 535

B&W International Polypropylene tool case
Extremely resilient, suitable for air transport

Execution:

- Impact-resistant polypropylene case, super-stable and can be stacked
- Automatic air-pressure equalisation valve
- Dustproof and waterproof to IP 67
- Eyelets for padlock
- Temperature-resistant from -40°C to +80°C
- **Ident. No. 670:**
 - Removable tool tray in the lid
 - Volume 12 l, max. payload 30 kg
 - Removable cover panel with loops for the base tray, closable base tray, can be divided as required using aluminium divider system
- **Ident. No. 670-690:** Ergonomic two-component handle
- **Ident. No. 680:** Volume 23 l, max. payload 30 kg
- **Ident. No. 680-690:**
 - Document compartment in lid

- Removable cover panel with pockets for the base tray, closable base tray, can be divided as required using aluminium divider system
- **Ident. No. 690:** Volume 33 l, max. payload 30 kg
- **Ident. No. 710:**
 - Ergonomic two-component handles
 - Solid telescopic handle resistant to torsion
 - Volume 38 l, max. payload 50 kg
 - Internal features: A4 document compartment, removable tool tray in lid with 22 tool pockets on the front and back, removable cover panel for the base tray with 14 tool pockets, base tray can be partitioned as required by aluminium partition system

Advantage:

- Indestructible and shatterproof
- **Ident. No. 710:** Easy to move around thanks to two large inline rollers

Delivery:

contains no tools



Ident. No. 670



Ident. No. 680



Ident. No. 690



Ident. No. 710

Model	JET3000	JET5000	JET6000	JUMBO6700
Internal length x internal width x internal height	329 x 233 x 152 mm	432 x 301 x 170 mm	473 x 351 x 197 mm	535 x 360 x 195 mm
Material	PP - Polypropylene	PP - Polypropylene	PP - Polypropylene	PP - Polypropylene
Capable of flying	Yes	Yes	Yes	Yes
55481...	Ident. No. 670	Ident. No. 680	Ident. No. 690	Ident. No. 710

Prod. Gr. 538

ATORN® leather tool bag with VDE tool assortment, 17 pieces

Execution:

- Robust, lockable leather tool case
- VDE tools according to DIN EN 60900
- Pliers with two-component handle and chrome-plated head
- Screwdriver with protective insulation and ergonomic two-component handle

Advantage:

- Produced to the highest standard of quality and tested individually

Delivery:

1 piece each VDE screwdriver slotted 2.5/3.5/5.5/8.0

- 1 piece each VDE screwdriver Phillips PH1, PH 2
- 1 piece VDE combination pliers 180 mm
- 1 piece VDE side cutters, 160 mm
- 1 piece VDE snipe nose pliers 200 mm
- 1 piece VDE water pump pliers 250 mm
- 1 piece Automatic wire stripping pliers
- 1 piece Cable knife with hooked blade
- 1 piece Machinist's hammer 300 g
- 1 piece Universal control cabinet key
- 1 piece Voltage tester screwdriver



52560... | Ident. No. 300

Prod. Gr. 582

ORION® Hard tool case with tool assortment, 48 pieces 60 pieces

Execution:

- Highly impact-resistant ABS plastic
- With solid aluminium frame
- With castors and ratchet hinges
- Lockable anti-tilt cylinder locks
- equipped with high-quality and robust ATORN, ORION and branded tools

Advantage:

- For heavy-duty use

Delivery:

- 1 jointed wooden ruler, 2 m
- 1 aluminium spirit level, 400 mm
- 1 tape measure, 3 m
- 12 combination spanners, widths 6/7/8/9/10/11/12/13/14/17/19/22 mm
- 3 slotted screwdrivers, 4.0 x 100/5.5 x 100/6.5 x 125 mm
- 2 Phillips screwdrivers, PH 1/PH 2
- 4 VDE slotted screwdriver, 2.5 x 75/4 x 100/5.5 x 125/8.0 x 175 mm
- 2 VDE Phillips screwdrivers, PH 1/PH 2

- 1 voltage tester 3 x 65 mm
- 1 automatic wire strippers
- 1 safety knife
- 1 tweezers 110 mm
- 1 all-purpose scissors
- 1 side cutters 165 mm
- 1 snipe nose pliers 160 mm
- 1 water pump pliers 240 mm
- 2 machinist's hammers 200/500 g
- 1 combination pliers 180 mm
- 1 plastic hammer, 32 mm
- 1 reamer, 100 mm
- 1 scriber
- 1 flat chisel, 175 mm
- 1 set of 6 (5 drift punches 2-6 mm / 1 centre punch)
- 3 workshop files with case, 150 mm H2: Flat/round/half-round
- 8 hex. screwdrivers 2-10 mm
- 1 metal saw blade with 300-mm blade
- 1 screw clamp, 200 mm



52560... | Ident. No. 500

Prod. Gr. 580

ATORN® Hard tool case with tool assortment, 48 pieces 48 pieces

Execution:

- Highly impact-resistant ABS plastic
- With solid aluminium frame
- With castors
- Ratchet hinges
- Lockable anti-tilt cylinder locks
- Equipped with high-quality and robust ATORN tools

Advantage:

- For heavy-duty use

Delivery:

- 9 combination wrenches, size 8/9/10/11/13/14/15/17/19 mm, 2 Phillips screwdrivers PH 1 x 80 mm, PH 2 x 100 mm, 1 hexagon socket wrench insert, long, with ball head size 1.5 to 10, 1 TX wrench set with ball head TX 9 to 40, 3 slotted screwdrivers 4.5 x 90 mm/6.5 x 125 mm/8.0 x 150 mm, 1 machinist's hammer, 500 g, 1 pair of combination pliers, 180 mm, 1 pair of snipe nose pliers, 1 pair of side cutters, 165 mm, 1 pair of water pump pliers, 250 mm, 1 aluminium handsaw bow, 300 mm, 10 saw blades for metal, 1 folding rule, 2 m



52560... | Ident. No. 600

Prod. Gr. 582

ATORN® Roller tool case with 38-piece tool assortment

Execution:

- Highly impact-resistant ABS plastic
- With solid aluminium frame
- With castors and ratchet hinges
- Lockable anti-tilt cylinder locks
- Equipped with high-quality and robust ATORN tools

Delivery:

1 wheeled case 470 x 190 x 360 mm, 1 combination spanner 9 pcs 8–19 mm, 1 hexagonal socket

screwdriver 9 piece, 1 TX screwdriver flap holder, 8 piece, 1 screwdriver 4.5 x 90 mm, 1 screwdriver 6.5 x 125 mm, 1 screwdriver 8.0 x 150 mm, 1 screwdriver PH 1 x 80 mm, 1 screwdriver PH 2 x 100 mm, 1 3C machinist's hammer 0.3 kg, 1 combination pliers 180 mm, 2-component handle, 1 pair of snipe nose pliers 200 mm, bent, 2-component handle, 1 pair of water pump pliers 250 mm, chrome plated, 1 pair of side cutters 165 mm, 2-component handle, 1 soft-face hammer, recoil-free, 30 mm, 1 utility knife with 18-mm snap-off blade



52560... | Ident. No. 700

Prod. Gr. 582

ATORN® Tool case with 50-piece tool assortment

Application:

Tool case equipped with wide range of tools, with hard foam inlay – all tools are neatly laid out and held securely.

Execution:

- Robust and durable tools in industrial quality
- Screwdriver, pliers and reversible ratchet with two-component handles with perfect ergonomic functionality
- case external dimensions: H 440 x W 505 x D 130 mm

Advantage:

- Case features sandwich frame construction that affords the case a large carrying capacity
- Fasteners closed with your knees firmly press the case together and give it excellent stability
- Softtouch grip; provides support and comfort when being worn
- Easy to open the case on both sides; tools are held securely in foam and cannot fall out
- Partition panel in the centre of the case also provides optimum protection for tools

Delivery:

1 DIN 3113 A combination wrench set, chrome-plated 8 pcs, size 8–19 mm
1 ½" hexagon socket wrench inserts, in size 10 to 24 mm

1 ½" hexagon spark plug insert, w. rubber insert wrench 20.8
1 ½" reversible ratchet, with quick-release button 255 mm
1 ½" handle with slide piece and cardan joint, 70 mm
1 ½" extension, 125 mm and 250 mm
1 hexagon ball end L-key set, 9 pcs, long, size 1.5–10 mm
1 workshop screwdriver, slotted 0.8 x 4.5/1.0 x 5.5/1.2 x 6.5 mm,
1 circular blade
1 cross-head screwdriver, PH 1 x 80 and PH 2 x 100 mm
1 machinist's hammer, DIN 1041 with nylon protective handle sleeve, 300 g
1 pair of water pump pliers, 250 mm
1 pair of combination pliers, 180 mm
1 pair of side-cutters, 160 mm
1 VDE single-pin voltage tester, 150–250 volt
1 pocket measuring tape, end hook with magnet, 5 metres
1 pair of flat-nose round pliers, 200 mm
1 universal knife, w. 18-mm snap-off blade
1 LED pen light, incl. battery
1 universal voltage tester, 6–24 volt



52560... | Ident. No. 800

Prod. Gr. 582

GEDORE® tool case with Touring 1000 tool assortment

Execution:

- 47 vanadium steel tools
- Chrome-plated
- In plastic case
- External case dimensions 420 x 320 x 115 mm

Advantage:

- Tool assortment based on practical experience

Delivery:

11 combination wrenches 6/7/8/10/11/12/13/14/15/17/19 mm
4 slotted screwdrivers 3/4/5.5/6.5 mm
2 cross-head screwdrivers PH 1-2
8 hex screwdrivers in holder 2/2.5/3/4/5/6/8/10 mm

1 pair of combi pliers, 180 mm
1 pair of side-cutters, 160 mm
1 pair of water pump pliers, 250 mm
9 ½" drive hex inserts, size 10/11/12/13/14/15/17/19/22 mm
1 spark plug insert, 20.8 mm
1 reversible ratchet
1 cardan joint
1 T-handle
2 extensions 125/250 mm
1 voltage tester
1 machinist's hammer, 300 g
1 small parts container
1 folding knife



52620... | Ident. No. 015

Prod. Gr. 530



tool cases with tool assortment

Execution:

- Tools neatly laid out and secure in two-tone soft foam inlay
- Impact-resistant plastic case tray
- 56 pieces
- External dimensions 445 x 360 x 106 mm, content

Delivery:

1 double open-end wrench 6 x 7, 8 x 9, 10 x 11, 12 x 13, 14 x 15, 16 x 17, 18 x 19, 21 x 22 mm, 1 slotted

screwdriver 4/5.5/6.5 mm, 1 Phillips screwdriver PH 1, PH 2, PZ 2, 1 hexagonal Allen key 2, 3, 4, 5, 6, 8 mm, 1 TX foldaway hand case T 9, 10, 15, 20, 25, 27, 30, 40, 1 ratchet 3/8 inch, 1 extensions 74, 150 mm/3/8 inch, 1 hex socket wrench inserts 8, 10, 11, 12, 13, 14, 15, 16, 17, 18, 19, 20, 21, 22/3/8 inch, 1 pair of universal pliers, 260 mm, 1 universal knife, 160 mm, 1 tape measure, 2 m, 1 universal shears, 180 mm. 1 machinist's hammer, 500 g, 1 LED pocket torch, 150 mm, 1 metal saw bow, 150 mm, 1 pair of side cutters, 165 mm, 1 transparent container



52620...

Ident. No.

030

Prod. Gr. 569

HEYCO HEYTEC assembly tool box

includes tool modules

Execution:

- 5-piece sheet steel tool box in hammertone blue
- lid can be closed using a U-lock
- 96-piece industrial tool assortment stored in 5 hard foam modules
- external dimensions of case 530x200x200 mm, complete weight 14.5 kg

Advantage:

- clear and orderly tool placement
- easily check whether the contents are complete at a glance.

Delivery:

1 each of combination spanner 8,10,11,12,13,14,15, 16,17,19,22,24 mm
 1 each of slotted screwdriver 4/5.5/6.5 mm
 1 each of Phillips screwdriver PH 1, PH 2
 1 each of hexagonal Allen key 1.5/2/2.5/3/4/5/6/8/10 mm

1 bit box - 32 pieces with magnetic bit holder and drive handle
 1 ratchet 1/2 inch
 1 each of extensions 125 and 250 mm, cardan joint/1/2 inch
 1 each of hexagonal socket wrench inserts 10,11,12,13,14,15,16,17,18,19,20,21,22,24,27,30, 32 mm/1/2 inch
 1 combination spanner 180 mm
 1 utility knife 170 mm
 1 tape measure 5 m
 1 water pump pliers 250 mm
 1 each of machinist's hammer 300 g, sledge hammer 1000 g
 1 LED telescopic pocket torch 195-570 mm
 1 roller open-ended spanner 255 mm
 1 side cutters 160 mm
 1 each of centre punch, pin punch 3 and 4 mm, drift punch 3 mm



52620...

Ident. No.

050

Prod. Gr. 580

HEYCO HEYTEC plumber's tool box

includes tool modules

Execution:

- 5-piece sheet steel tool box in hammertone blue
- lid can be closed using a U-lock
- 77-piece plumber's tool assortment housed in 6 hard foam modules
- external dimensions of case 530x200x200 mm, complete weight 17.0 kg

Advantage:

- clear and orderly tool placement
- easily check whether the contents are complete at a glance.

Delivery:

1 impact tool set, 5 pieces, machinist's hammer 500 g
 1 utility knife, 1 universal wrench
 1 pass-through ratchet 1/2 inch with step wrench

and inserts 10, 13, 17, 19, 21, 22 mm
 1 each of water pump pliers 250 mm, corner pipe wrench 1 1/2 inch
 1 spirit level 230 mm, LED head torch
 1 adjustable single open-end wrench, pipe deburrer
 1 VDE combination pliers and VDE telephone pliers
 1 stone chisel, ratcheting pipe cutter
 1 half-round file and round file, 200 mm
 1 plumber's socket wrench, tape rule 5 m
 1 basin wrench with 6 replaceable inserts
 2 pipe cutters up to 32 mm
 1 metal bow saw 150 mm
 5 VDE screwdrivers, voltage tester
 1 each of double open-end wrench 6x7 to 20x22 mm
 1 express wrench
 1 each of TX Allen key set and hex key set



52620...

Ident. No.

055

Prod. Gr. 580



Competence XXL 2 electrician's tool set
115 mixed pieces in hard shell roller case

Application:

Full range of equipment for the professional electrician for mobile use

Execution:

- Extremely robust trolley with large inline rollers and cover brake
- Exceptionally large storage space
- 115 high-performance tools securely stored

Delivery:

1 each of	VDE slotted screwdriver: 3.5/4.0/5.5/6.5, PH 1+2, PZ 1+2, SL PH 1+2, SL PZ 1+2	1 each of	VDE precision screwdriver 2.5/3.0/ PH 0 / PH 1
1	Slim-Line replacement blade set with VDE torque screwdriver	1 each of	voltage tester and line tester
1 each of	VDE socket wrench 5.5/7/8/10/13 mm	1 each of	hexagonal T-handle wrench set, spirit level, folding rule, switch cabinet key stripping knife with hooked blade
		1 each of	bit set in holder, automatic wire stripping pliers, VDE water pump pliers
		1 each of	VDE side cutters, heavy-duty side cutters, cable cutters, combination pliers,
		1 each of	VDE snipe nose pliers, straight and curved, electronics cutters
		1 each of	crimping tool for wire end ferrules and crimping tool for plug-in connectors
		1 each of	bit holder handle VDE and Stubby bit holder handle



52562...

Ident. No.

020

Prod. Gr. 586



Universal tool kit 15 pieces Kraftform compact SH 2
In robust textile bag with riptape fastening

Execution:

- Useful practical set configuration with WERA tools in proven quality

Delivery:

1 piece each	Socket spanner screwdriver size 10 and 13 mm	1 piece each	Allen key, width across flats: 3, 4, 5, 6 mm
1 piece	Slotted screwdriver 1.2 x 7 x 125 mm	1 piece each	Joker switch open-jaw ring ratchet spanner size 10 and 13 mm
		1 piece	VDE Kraftform hand holder with 4 interchangeable blades PH 1 and 2, slot 3.5 and 5.5
		1 piece	Single-pole voltage tester
		1 piece	Hook and loop strips 240x240x50 mm



52620...

Kraftform compact SH 2

Ident. No.

100

Prod. Gr. 542

ORION® Tool assortment
Files and saws, 11-piece

Delivery:

1	flat blunt-end file 300 mm, cut 1	1	square files 250 mm, cut 2
1	flat blunt-end file 300 mm, cut 3	1	half-round file 250 mm, cut 2
1	triangular file 250 mm, cut 1	1	file brush
1	triangular file 250 mm, cut 3	1	saw bow 300 mm
1	round file 250 mm, cut 2	1	bi-metal saw blade
		1	chip brush



52561...

Ident. No.

010

Prod. Gr. 6AF

Tool assortment
Hammers, chisels and pliers, 20-piece

Delivery:

1	machinist's hammer, 300 g	1	pair of ear defenders
1	machinist's hammer, 500 g	1	triangular hollow scraper, 150 mm
1	chisel/drift/6-piece centre punch set	1	cutter knife with trapezoidal blade
1	dividing caulker 150 mm	1	recoil-free soft-face hammer, 40 mm
1	pair of safety goggles	1	pair of side-cutters, 165 mm, w. 2-C handle sleeve
1	slotted screwdriver, 6.5 mm	1	pair of water pump pliers, 250 mm
1	pair of leather work gloves	1	cross-head screwdriver PH 2
1	hand brush		



52561...

Ident. No.

020

Prod. Gr. 593

ATORN® Tool assortment
For electricians, 18-piece

Delivery:		1	pair of automatic wire strippers
1	VDE screwdriver, 6 pcs, slotted/PH	1	electrician's knife
1	voltage tester screwdriver	1	pair of wire end ferrule pliers, 0.25-16 mm ²
1	control cabinet key	1	BENNING DUTEST continuity tester
1	pair of VDE combi pliers 180 mm	1	LED pen light with batteries
1	pair of VDE snipe-nose pliers, 200 mm, curved	1	ERSA Multitip soldering iron C 25
1	pair of VDE side-cutters, 160 mm	1	solder, 250 g



52561... Ident. No. 030

Prod. Gr. 597

Tool assortment
For industrial electronic engineers, 92 pieces

Delivery:		1	multi-purpose shears, 190 mm
1	machinist's hammer, 0.4 kg	1	crimping pliers for insulated connections, 210 mm
1	plastic hammer D 32	1	metal universal wrench, for control cabinet
1	half-round file, 200 mm, cut 2	1	comb. Contact screwdriver
1	hardwood file grip, 110 mm long	1	universal cable knife
6	key files, 100 mm, cut 2	1	cable stripper
1	mini universal saw, 240 mm	1	pair of round pliers, 160 mm, chrome-plated VDE
8	combination wrench, 8-19 mm	1	pair of side-cutters, 160 mm, chrome-plated VDE
6	hexagon screwdriver, 2-6 mm, in plastic pouch	1	pair of water pump pliers, 250 mm
1	socket wrench set; 1/4", 42 pieces	1	cable and assembly knife
7	VDE slotted screwdriver	1	pair of automatic wire strippers
1	long-nose flat pliers, 160 mm, chrome-plated, VDE	1	voltage tester
1	flat-nose round pliers, 200 mm, chrome-plated, curved 45 G, VDE	1	pair of wire strippers, 160 mm
1	VDE combination pliers, 180 mm, chrome-plated	1	wooden folding rule, 2 m
1	VDE side-cutters, 140 mm	1	



52560... Ident. No. 010

Prod. Gr. 580

Tool assortment
For industrial mechanics, 78-piece

Delivery:		1	1½" pipe wrench, 425 mm
1	spirit level, 500 mm	1	heavy-duty side-cutters, uncoated, 160 mm
1	machinist's hammer, 0.5 kg	1	pair of combination pliers, uncoated, 180 mm
1	plastic hammer D 40	1	pair of three-way pliers, chrome-plated, 160 mm
6	chisels, in sheet metal box	1	pair of pliers for retaining rings, straight 19-60 mm Ø type J 2
1	pair of blind rivet pliers, NTS model, in assortment	1	pair of pliers for retaining rings, straight 19-60 mm Ø type A 2
1	scriber with steel tip, 165 mm	1	pair of stainless steel hole scissors, left, 250 mm
1	flat blunt-end file, 200 mm, cut 2	1	pair of stainless steel hole scissors, right, 250 mm
1	round file 200 mm, cut 2	1	½ " square socket wrench set; in metal case; 13 pcs
1	half-round file, 200 mm, cut 2	1	pair of V-block gripping pliers, 250 mm
1	triangular file, 200 mm, cut 2	1	pocket tape measure, 3 m
4	hard wood file grips, 110 mm	1	precision pocket callipers, 150 mm
1	triangular hollow scraper, chrome-van. 150 mm	1	pair of universal safety goggles
1	metal saw bow for saw blade, 300 mm	1	safety knife with 3 trapezoidal blades
10	handsaw blade, HSS-Bi.Flex. 300 mm, 24 teeth	1	pair of work gloves
12	combination wrench, size 10-32 mm	1	
8	hexagon screwdrivers, 2-10 mm, in plastic pouch	1	
6	screwdrivers in box	1	
1	water pump pliers, 250 mm	1	



52560... Ident. No. 020

Prod. Gr. 580

